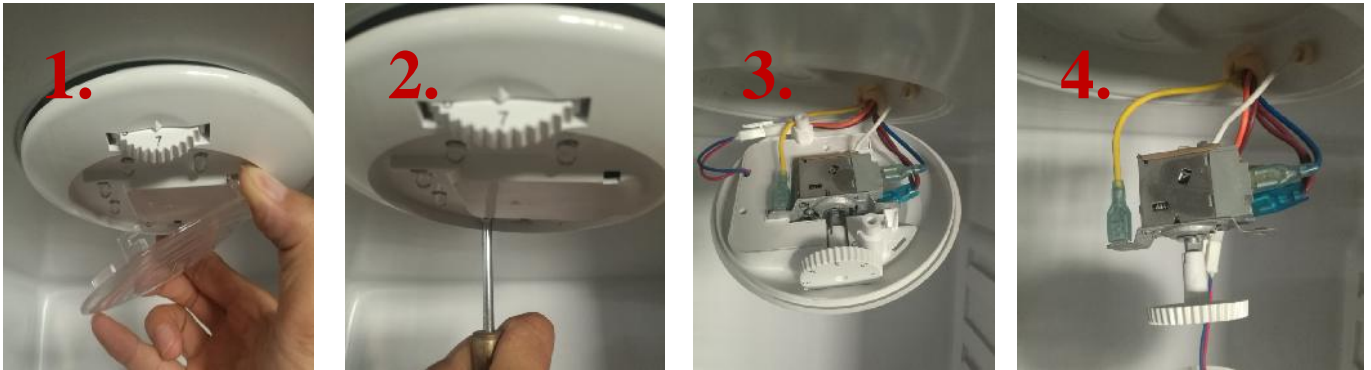
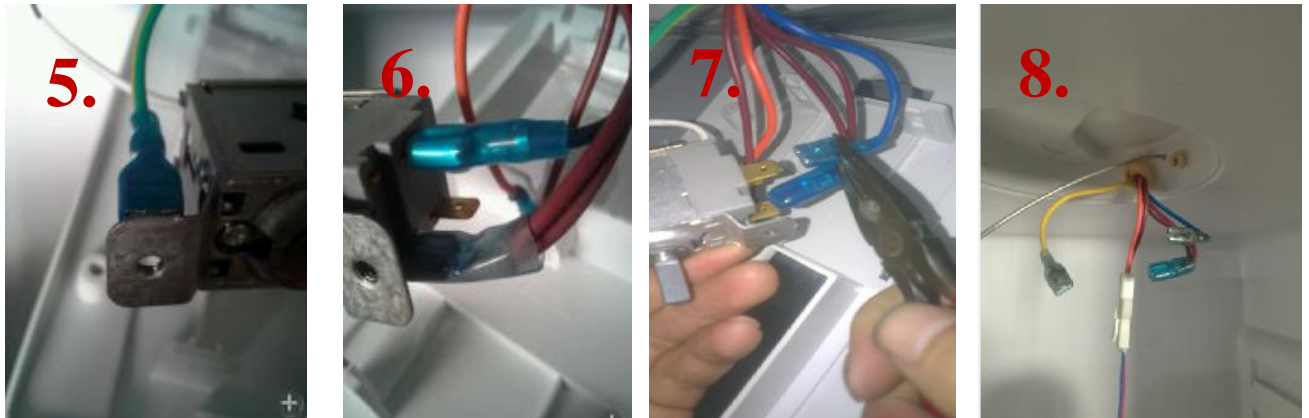


# SUNFR401 – THERMOSTAT REPLACEMENT INSTRUCTIONS

## *Disconnect the Power*



Remove the Interior Light (#1) Cover by unclipping it, and then remove the Two Inside Screws (#2) to Allow the Thermostat box to then Drop-Down. (#3-4)



Disconnect the Ground Electrical Connection (#5), and Single Wire on Thermostat (#6) The Larger wires on Thermostat are attached very tight fitting, use a pair of Pliers to remove (#7) The Thermostat can now be removed (#8)

**AFTER THERMOSTAT IS REMOVED, REVERSE THESE INSTRUCTIONS TO INSTALL THE NEW THERMOSTAT INTO PLACE.**

**IMPORTANT!** Do Not Overtighten the Screws on Thermostat Box when Re-Installing as it may cause the screw holes to lose their thread and screws will not tighten down