

### REQUIRED TOOLS

#### **ALLAN WRENCH**

(THE ONE INCLUDED IN YOUR MANUAL)

#### **ADJUSTABLE WRENCH**

#### **SCREW DRIVER**

(RECOMMEND MAGNETIC ONE)

#### **NEEDLE NOSE PLYIERS**

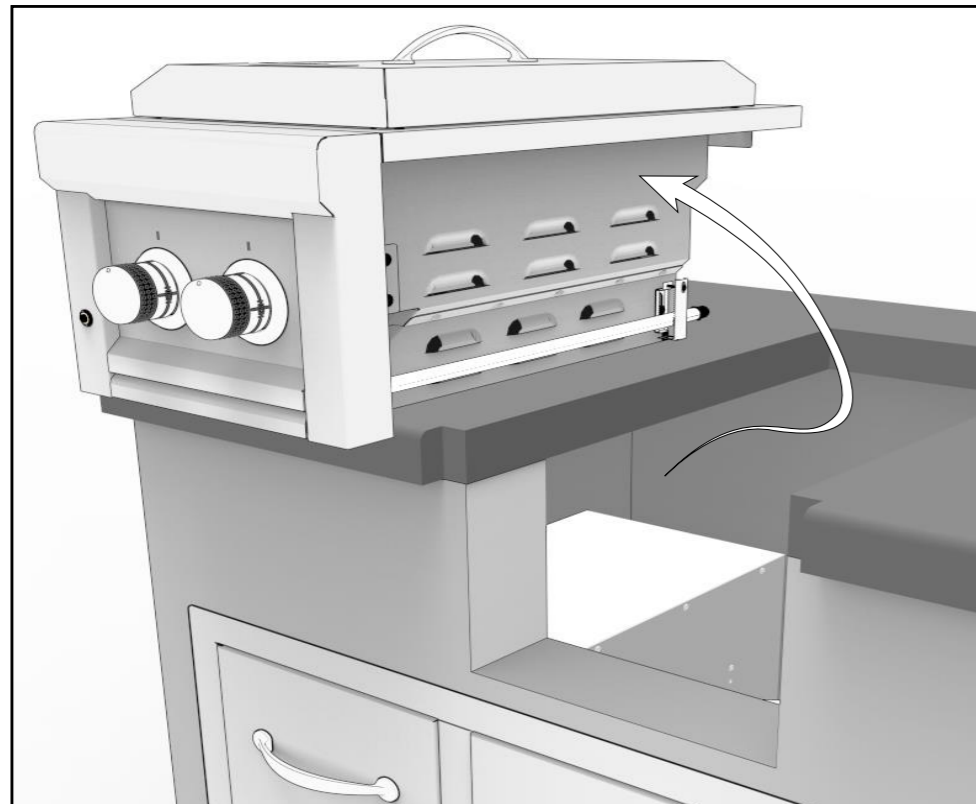
### REQUIRED PARTS

#### **LP REGULATOR W/18" HOSE**

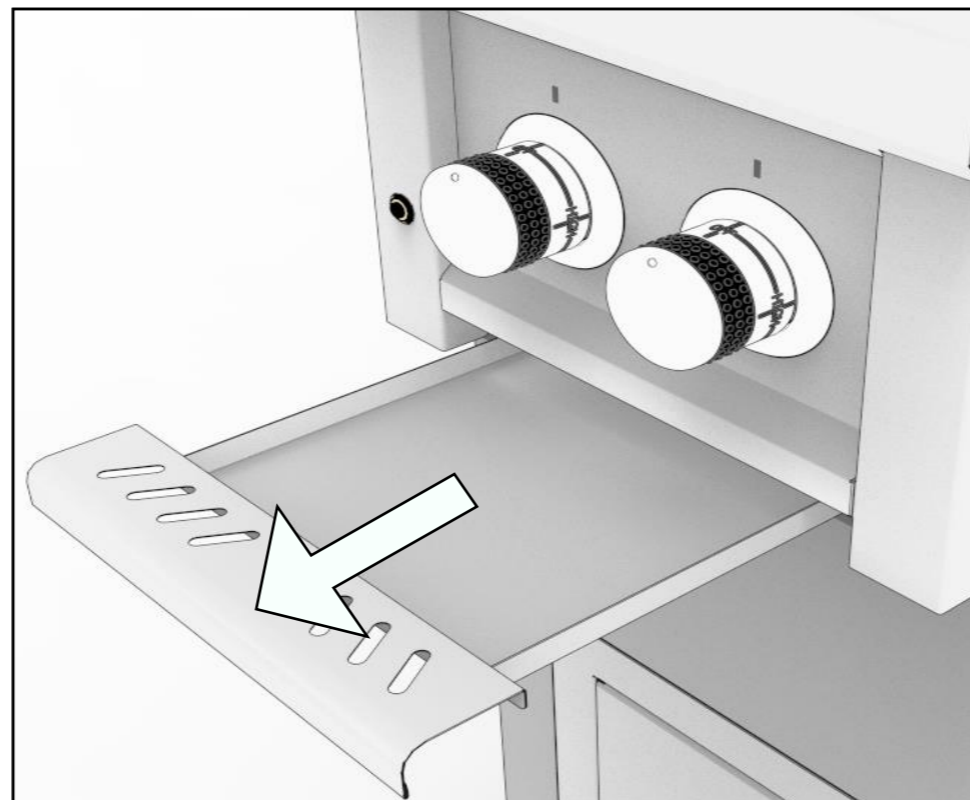
#### **1/2" TO 3/8" FLARE ADAPTER**

#### **#50 DRILL BIT**

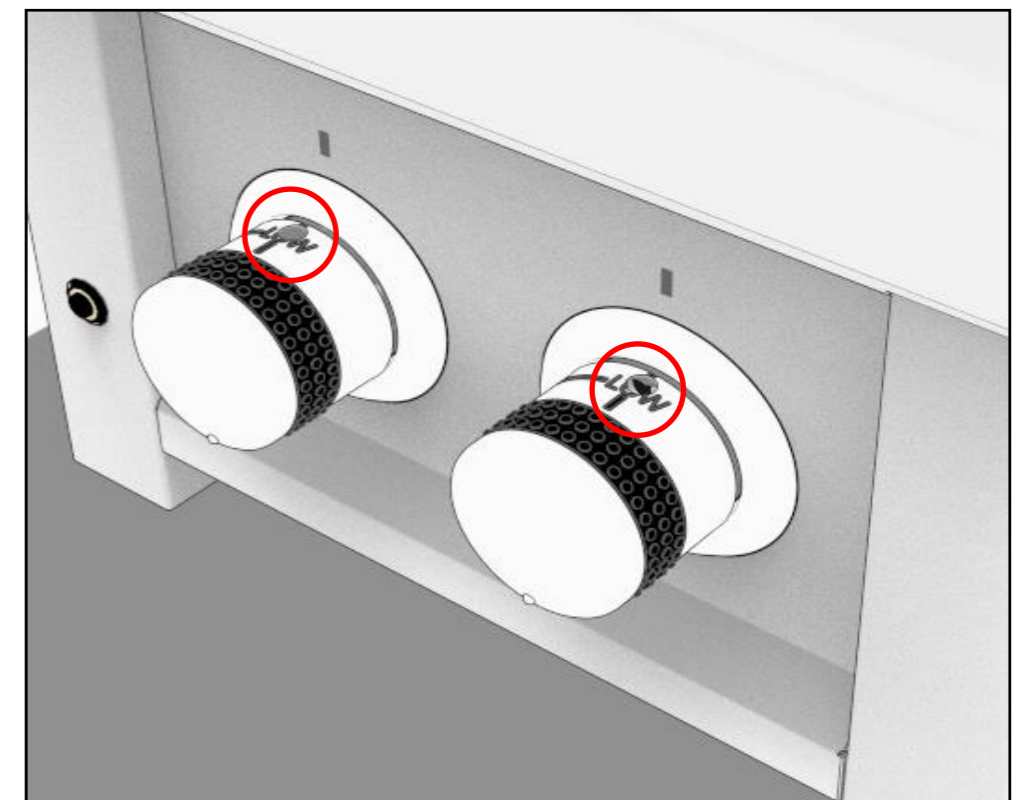
**1. REMOVE GRILL FROM ISLAND AND PLACE ON COUNTER TOP.**



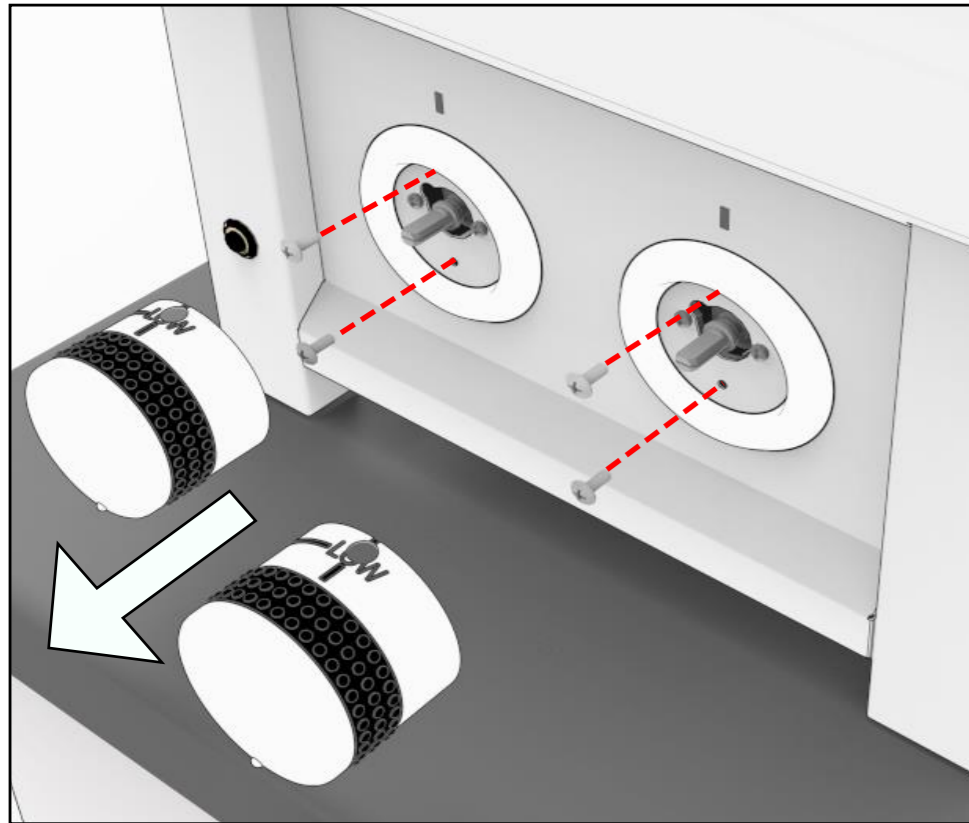
**2. COMPLETELY REMOVE DRIP-PAN AND PLACE ON COUNTER**



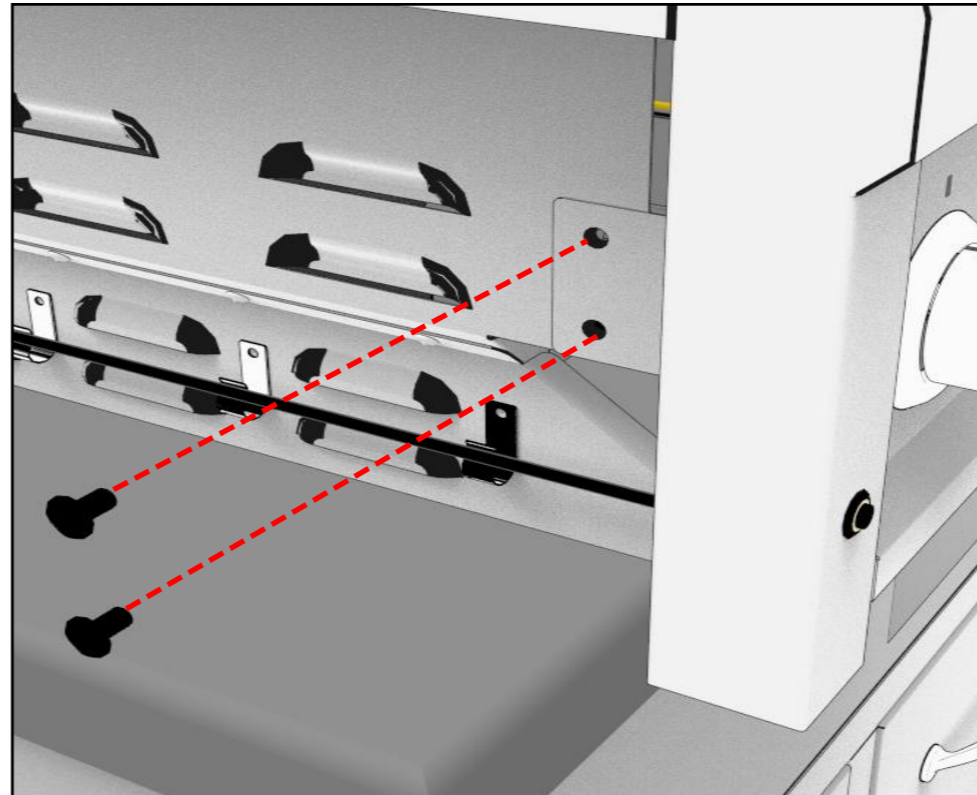
**3. TURN KNOBS COUNTER-CLOCKWISE TO REVEAL HOLE, USE ALLAN WRENCH TO REMOVE KNOBS. (ALLAN WRENCH IS INCLUDED IN YOUR MANUAL BAG)**



**4. UNSCREW AND REMOVE THE TOP AND BOTTOM SCREW ONLY BEHIND EACH KNOB**



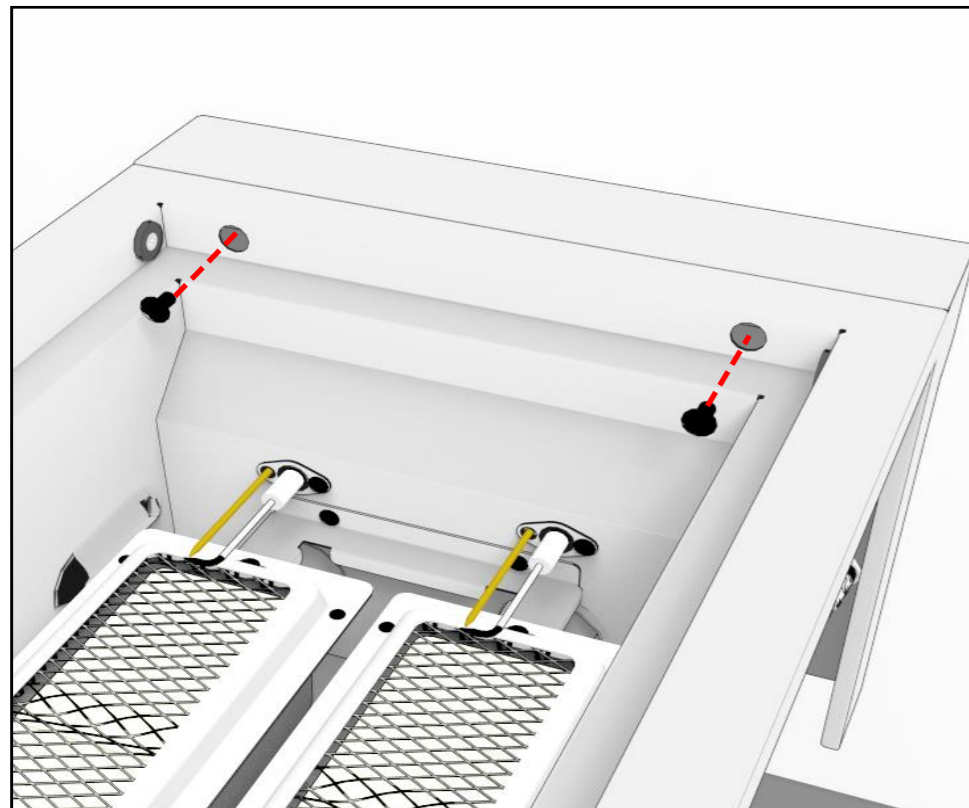
**5. REMOVE BOTH LEFT/RIGHT SIDES TWO SCREWS.**



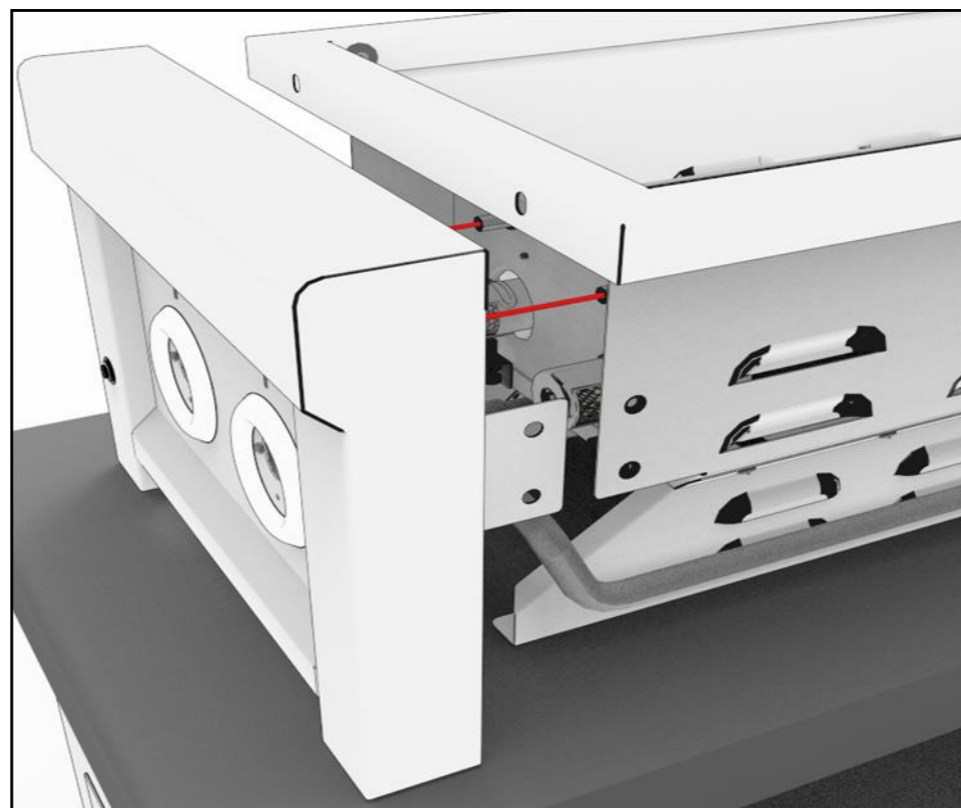
**6. REMOVE THE COVER, COOKING GRID AND FLAVORIZER RACK INSIDE GRILL**



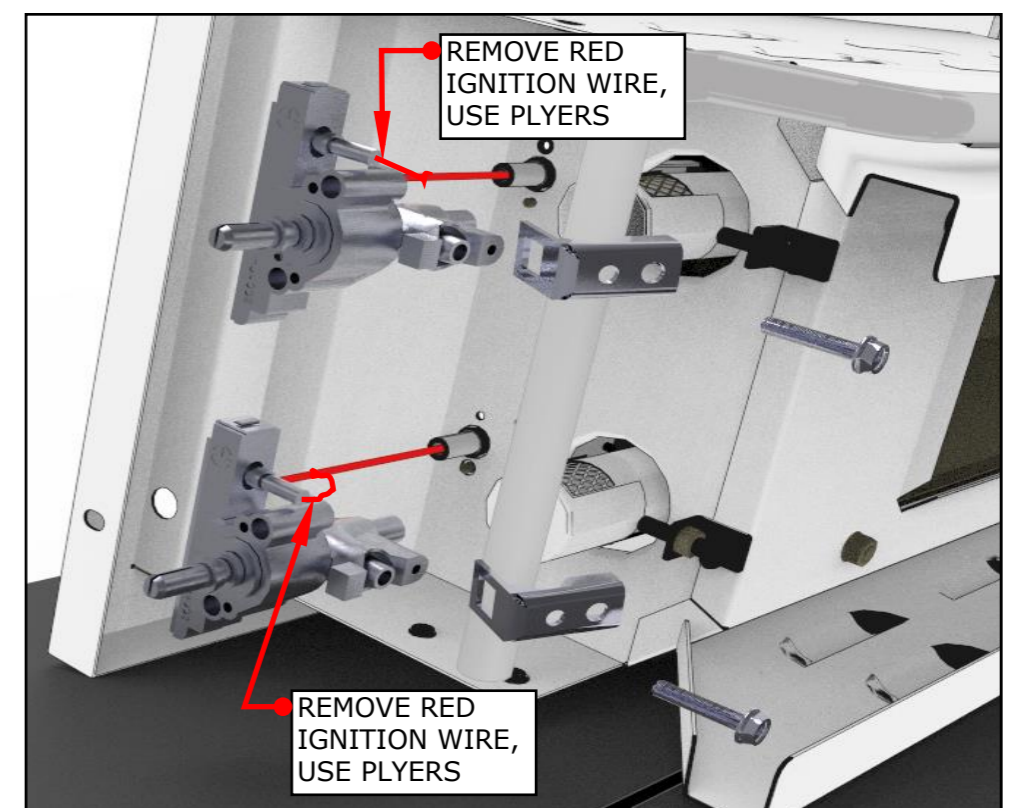
**7. USE SCREW DRIVER TO REMOVE THE TWO PANEL SCREWS IN PORT HOLES.**



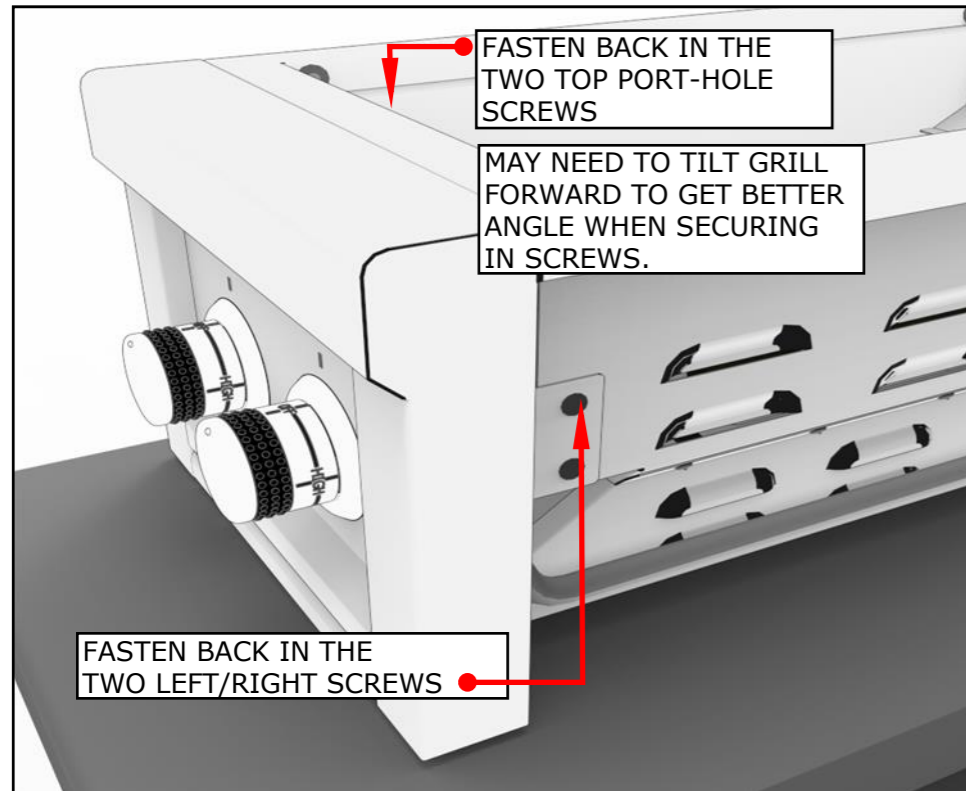
**8. SLIDE CONTROL PANEL FORWARD, LEAVING VALVES ATTACHED TO MANIFOLD.**



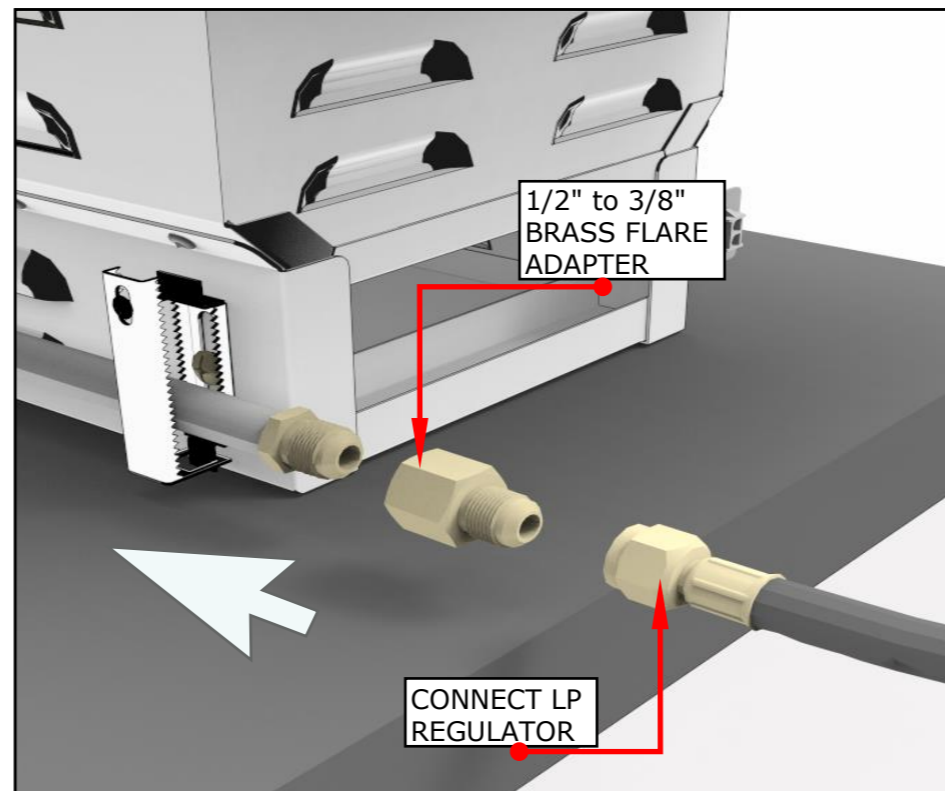
**9. ROTATE GRILL ON ITS SIDE, UNSCREW BOTH VALVE BRACKETS, RELEASING VALVES. REPLACE WITH NEW LP VALVES.**



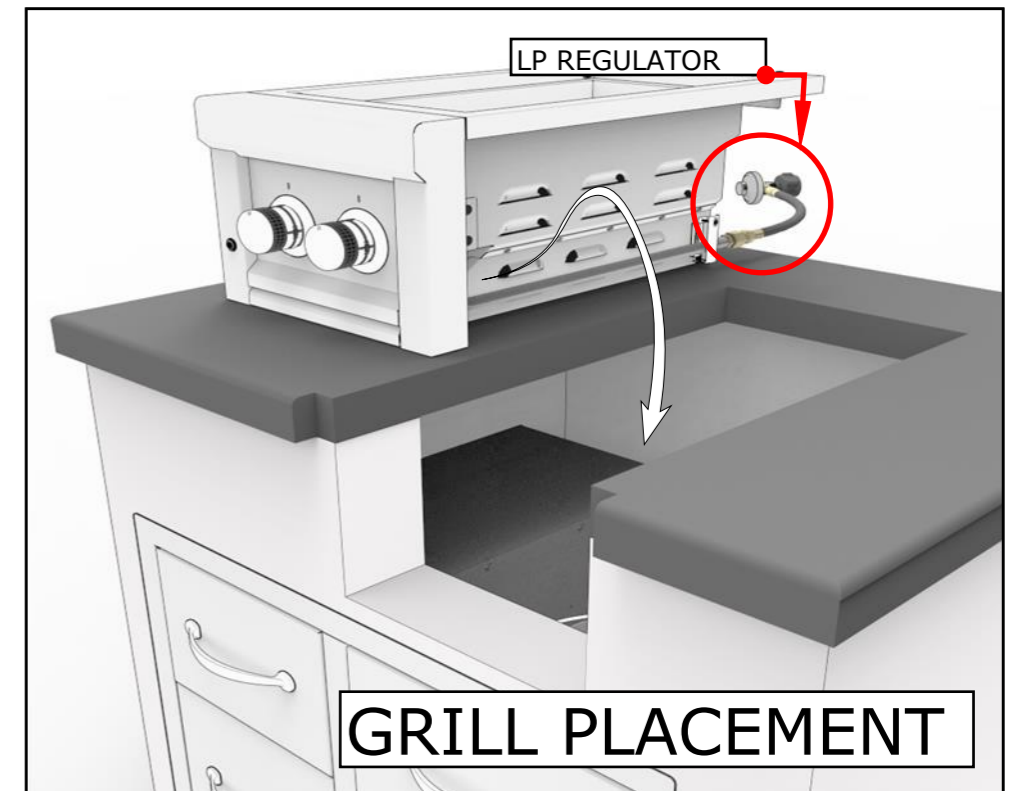
**10. ROTATE GRILL BACK, RE-MOUNT CONTROL PANEL AND SECURE KNOBS BACK ONTO VALVES.**



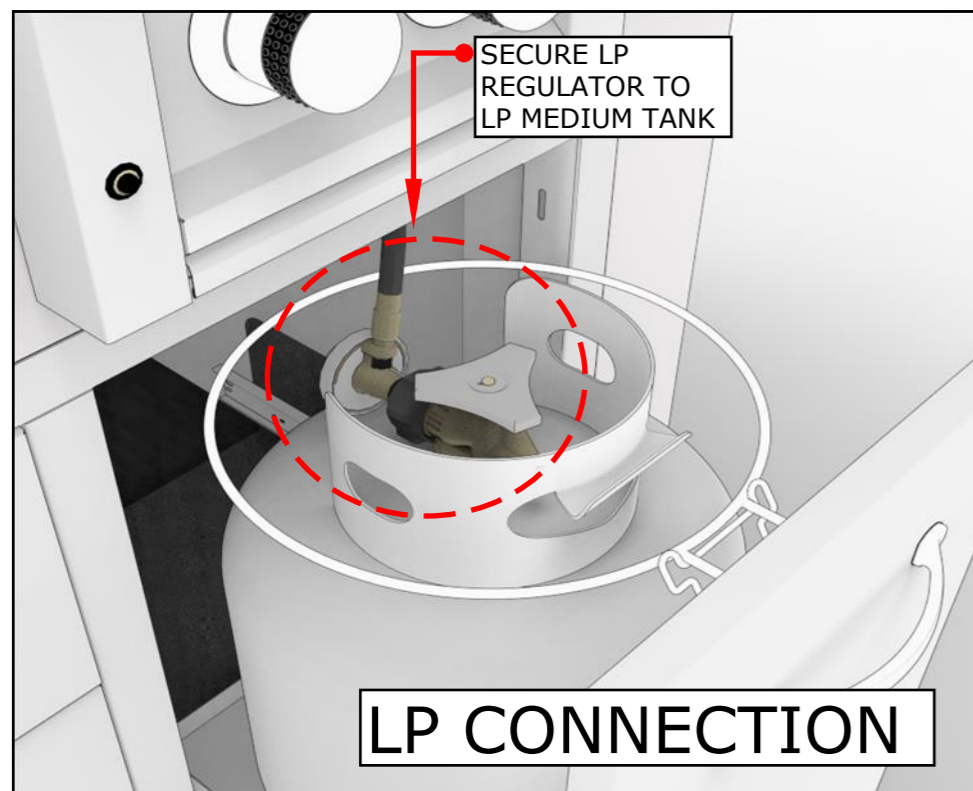
**11. INSTALL NEW 1/2" TO 3/8" FLARE REDUCER ADAPTER, NEXT CONNECT LP REGULATOR**



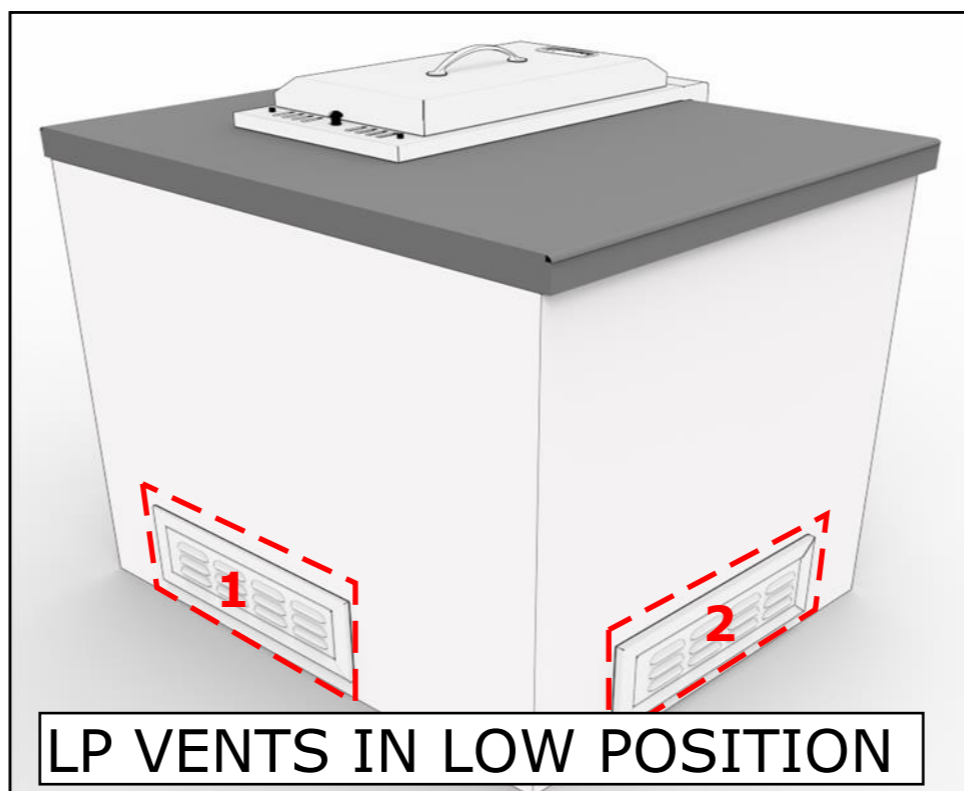
**12. PLACE GRILL INTO ISLAND RESTING INTO PLACE KEEPING LP REGULATOR ATTACHED.**



**13. CONNECT LP REGULATOR TO BOTTOM TANK, OR CONNECT TO HOME CONNECTION.**



**14. LIQUID PROPANE MUST HAVE MINIMUM TWO VENTS IN LOW POSITIONS NEAR GRILL**



### REQUIRED TOOLS

#### **SCREW DRIVER**

(RECOMMEND MAGNETIC ONE)

#### **ADJUSTABLE WRENCH**

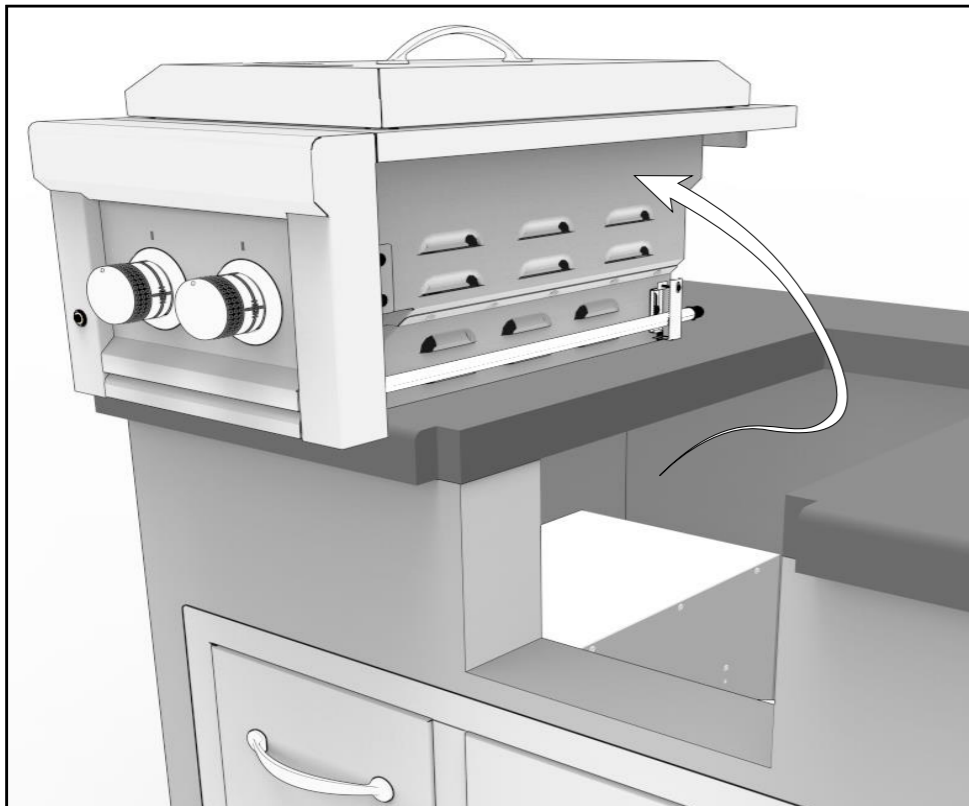
#### **POWER DRILL**

### REQUIRED PARTS

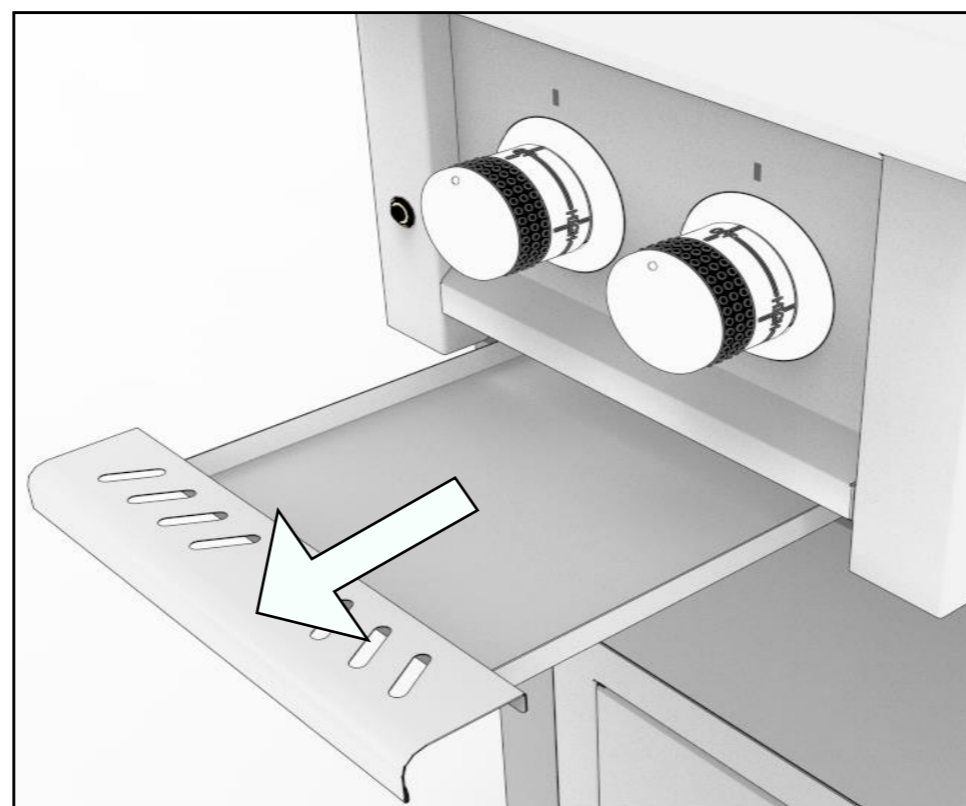
#### **NG REGULATOR WITH 3/8" FLARE ADAPTER**

#### **#50 DRILL BIT**

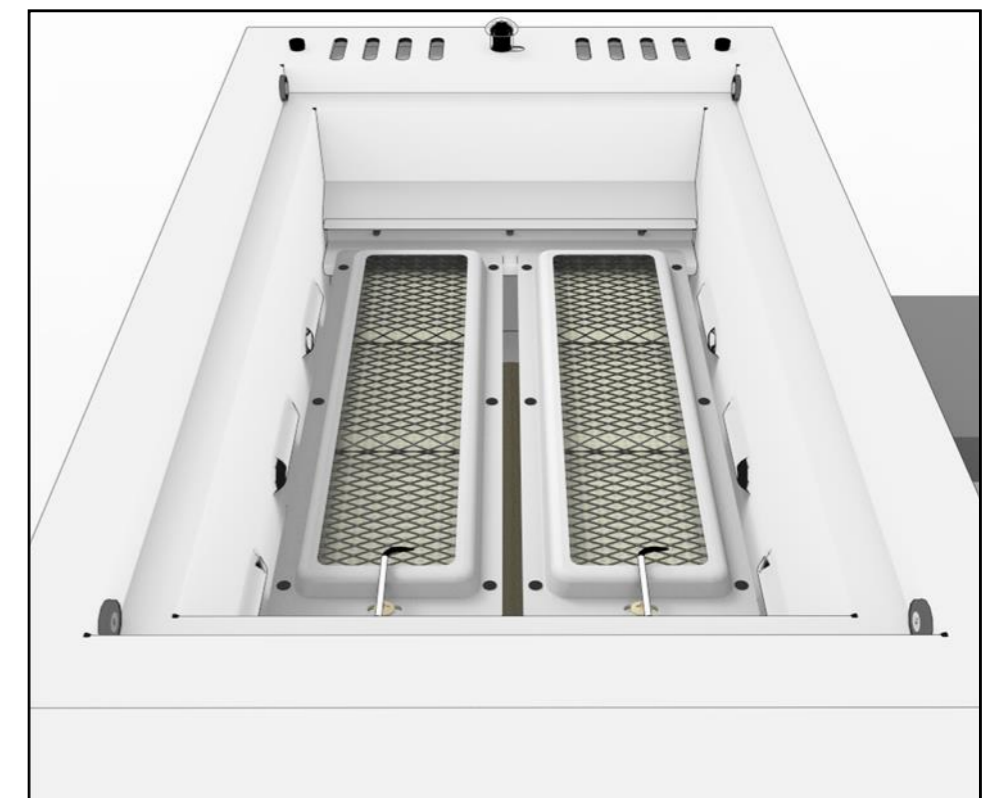
**1. REMOVE GRILL FROM ISLAND AND PLACE ON COUNTER TOP.**



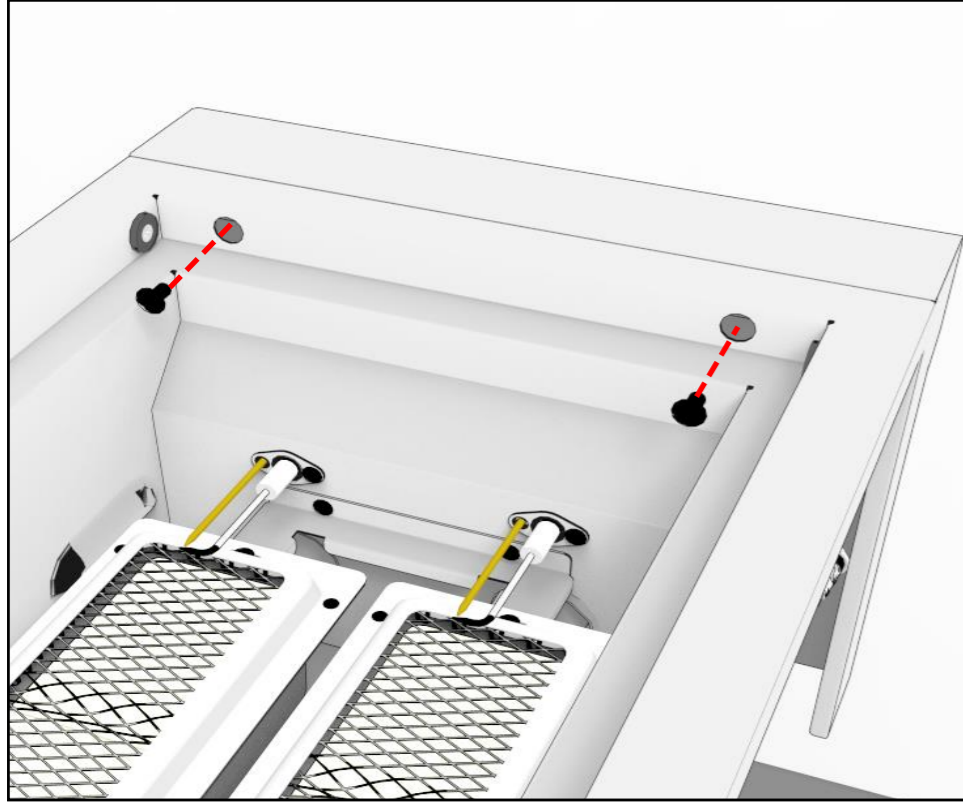
**2. COMPLETELY REMOVE DRIP-PAN AND PLACE ON COUNTER**



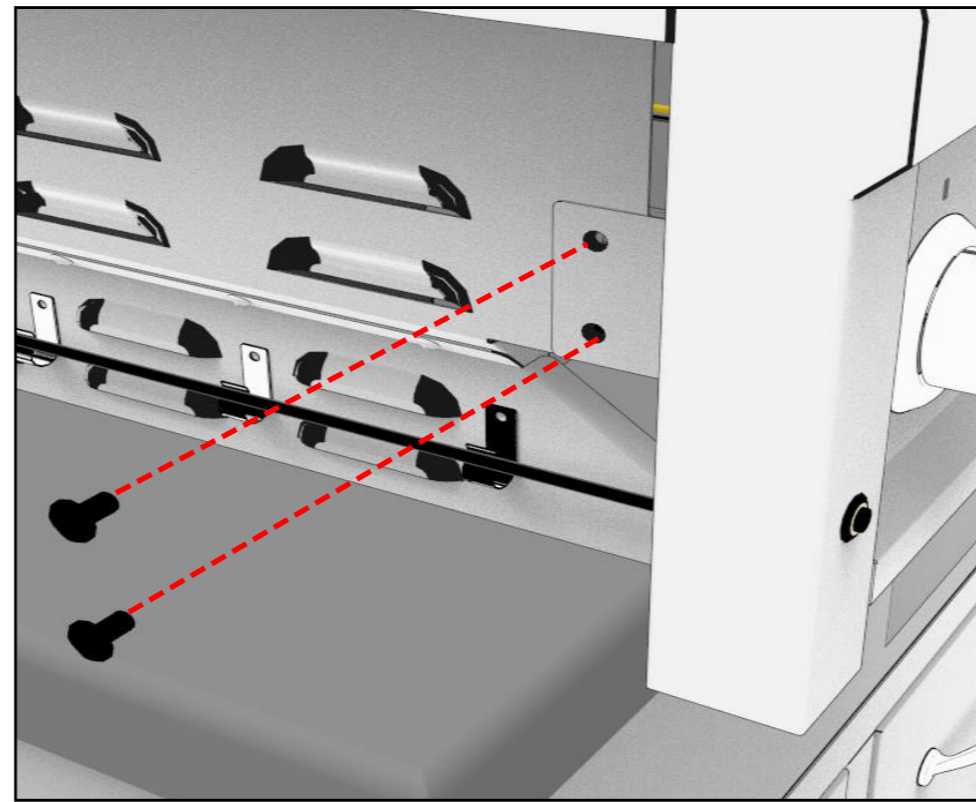
**3. REMOVE THE COVER, COOKING GRID AND FLAVORIZER RACK INSIDE GRILL**



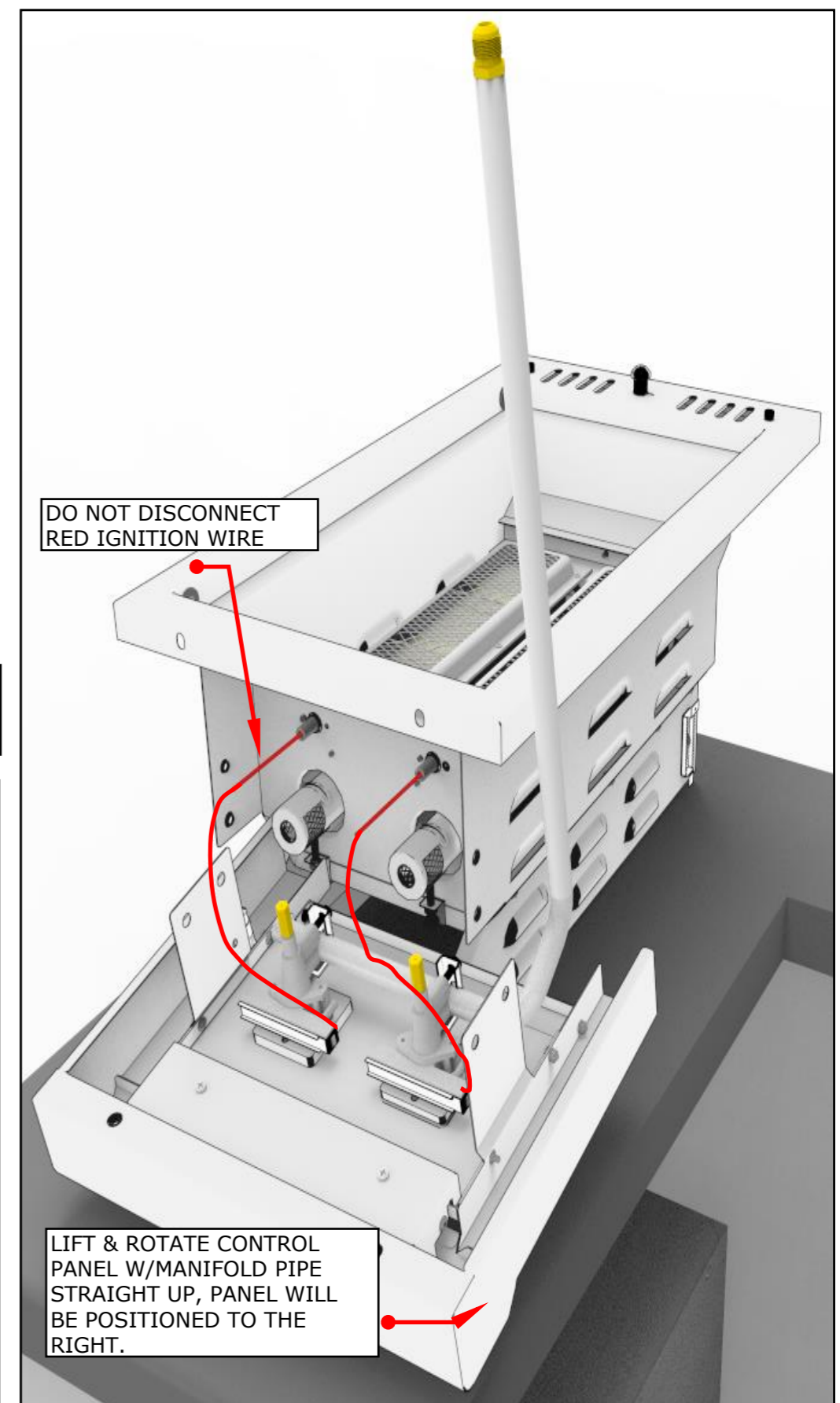
**4. USE SCREW DRIVER TO REMOVE THE TWO PANEL SCREWS IN PORT HOLES.**



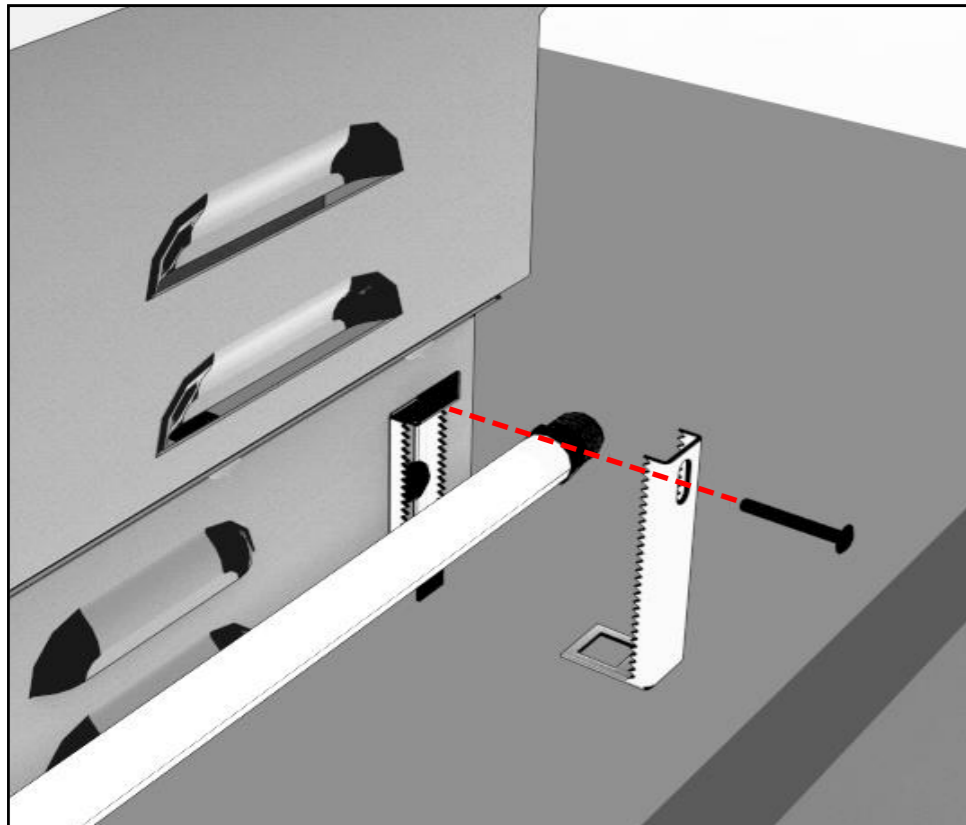
**5. REMOVE BOTH LEFT/RIGHT SIDES TWO SCREWS.**



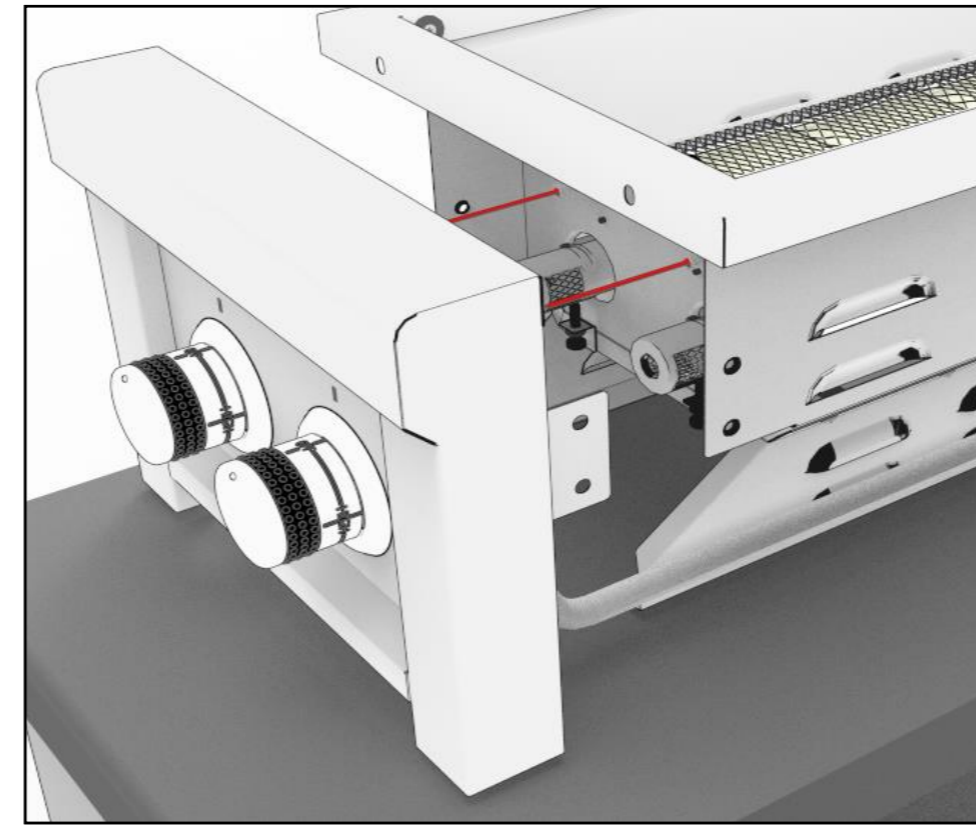
**8. ROTATE CONTROL PANEL SO MANIFOLD PIPE IS STRAIGHT UP, KEEPING VALVE WIRES ATTACHED.**



**6. REMOVE MANIFOLD PIPE BRACKET LOCATED IN BACK OF GRILL FOR LP TO NG CONVERSION ONLY!**

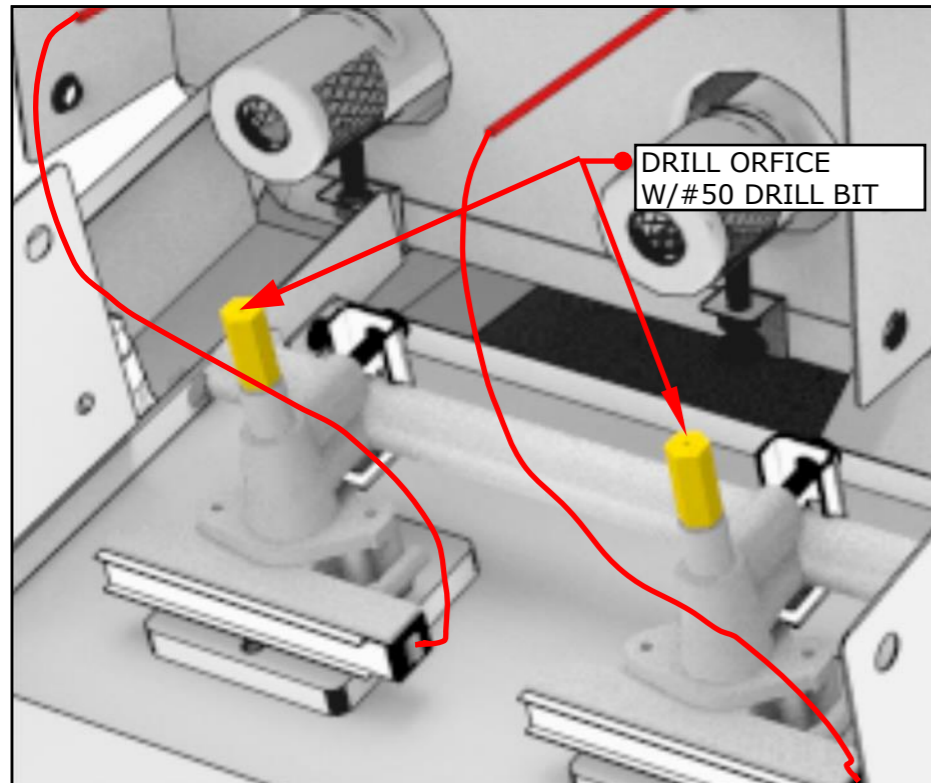


**7. SLIDE COMPLETE CONTROL PANEL OUTWARD, DISCONNECT THE TWO ELECTRICAL PLUGS ON LEFT SIDE.**

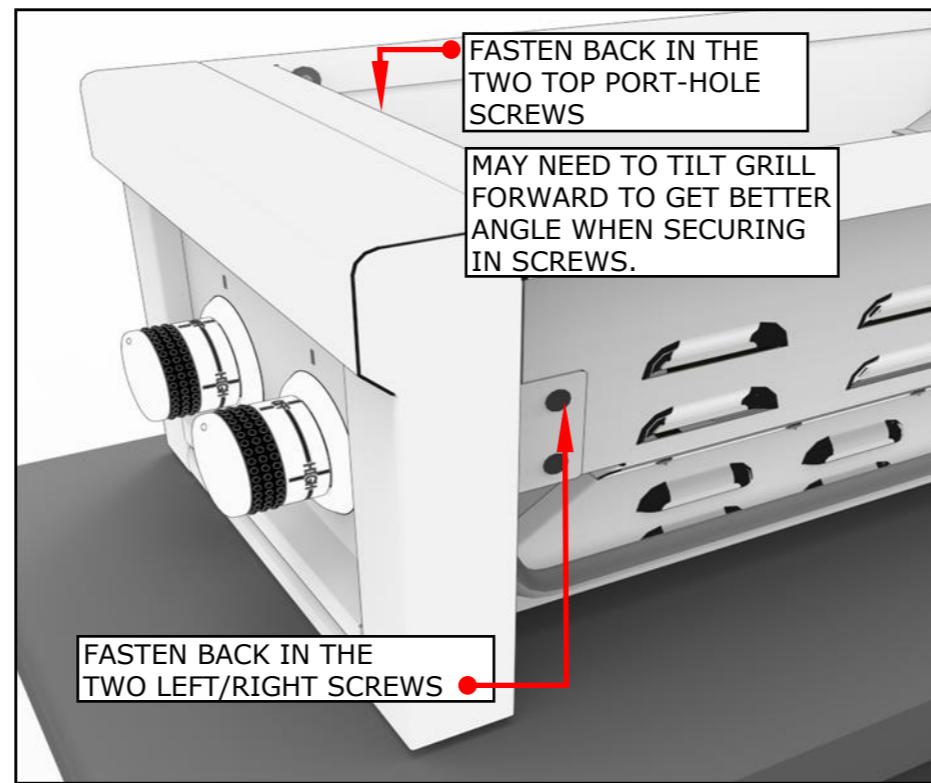


LIFT & ROTATE CONTROL PANEL W/MANIFOLD PIPE STRAIGHT UP, PANEL WILL BE POSITIONED TO THE RIGHT.

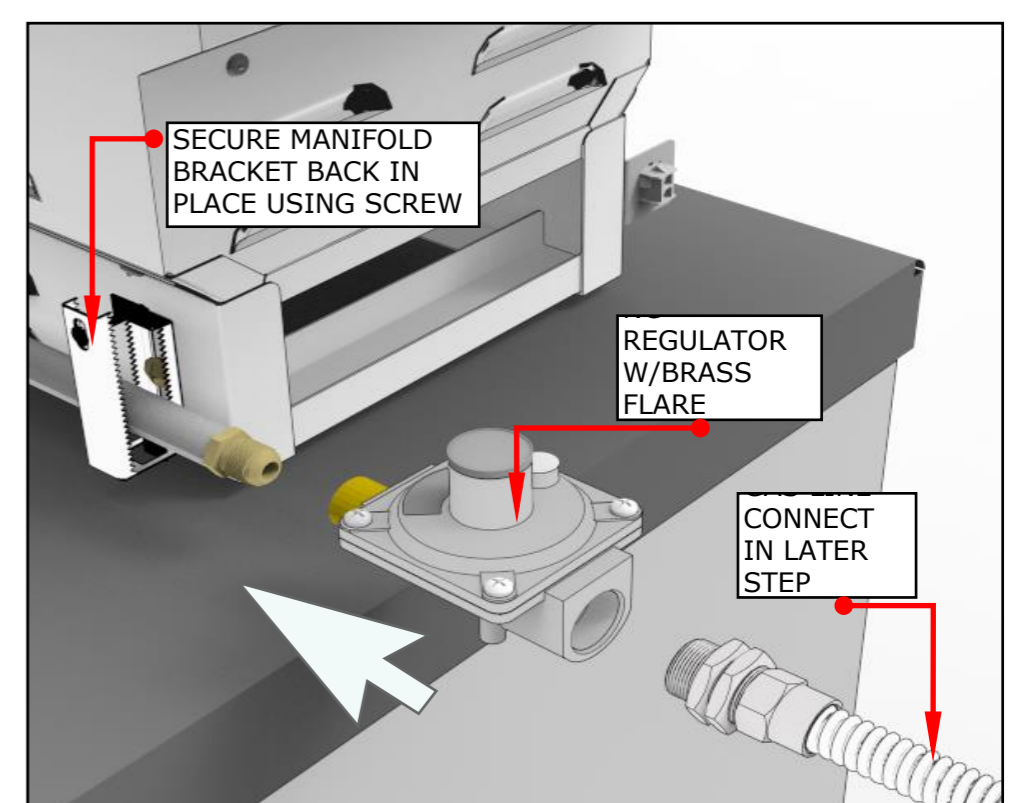
### 9. DRILL THE TWO ORIFICE HOLES USING #50 DRILL BIT



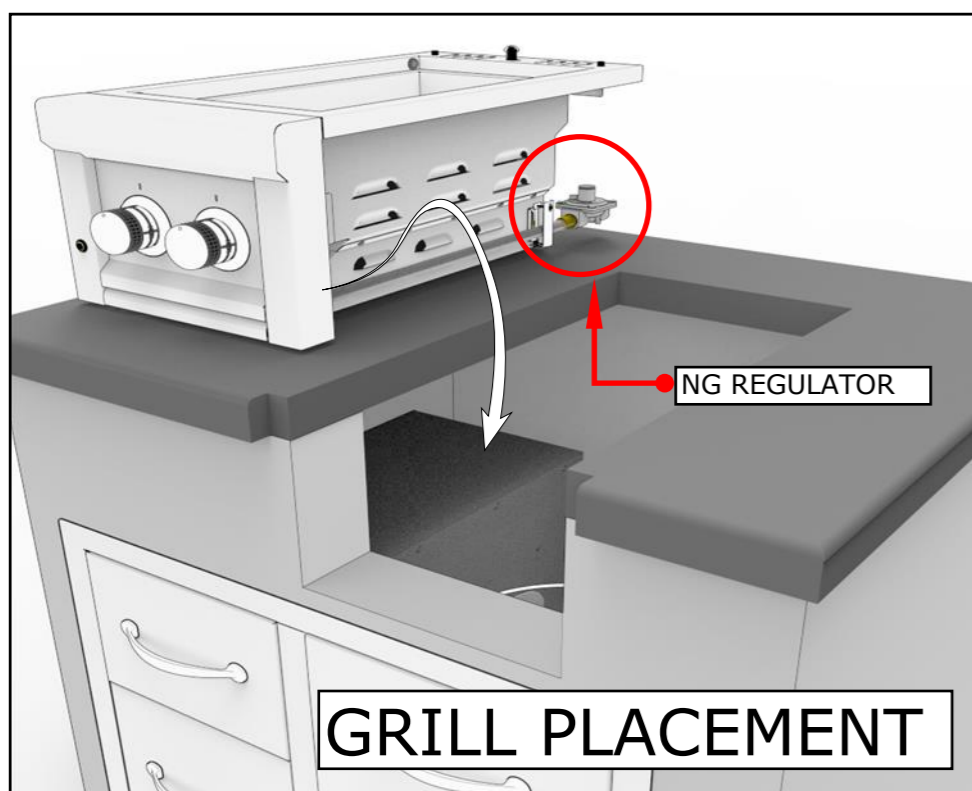
### 10. LIFT & ROTATE CONTROL PANEL BACK SLIDING MANIFOLD INTO PLACE



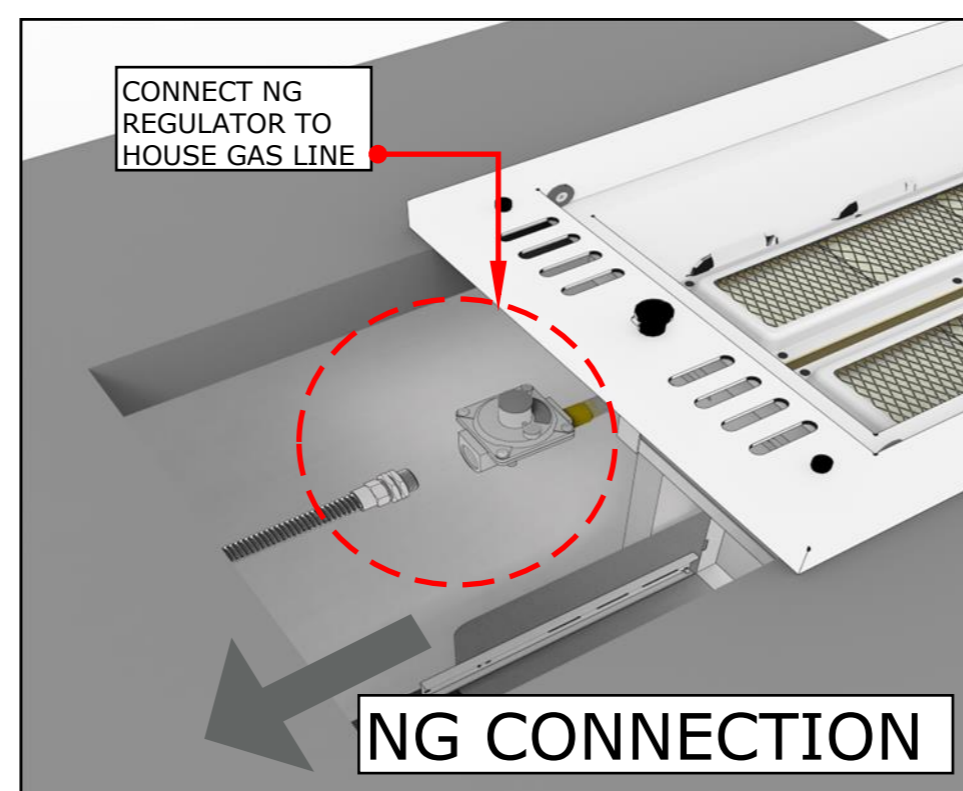
### 11. INSTALL THE NEW REGULATOR WITH BRASS FLARE ADAPTER.



### 12. PLACE GRILL INTO ISLAND ALLOWING SPACE IN BACK FOR REGULATOR ACCESS.



### 13. MAKE FINAL GAS LINE CONNECTION BEFORE SLIDING GRILL IN PLACE.



### 14. NATURAL GAS MUST HAVE MINIMUM TWO VENTS IN HIGH POSITIONS NEAR GRILL.

