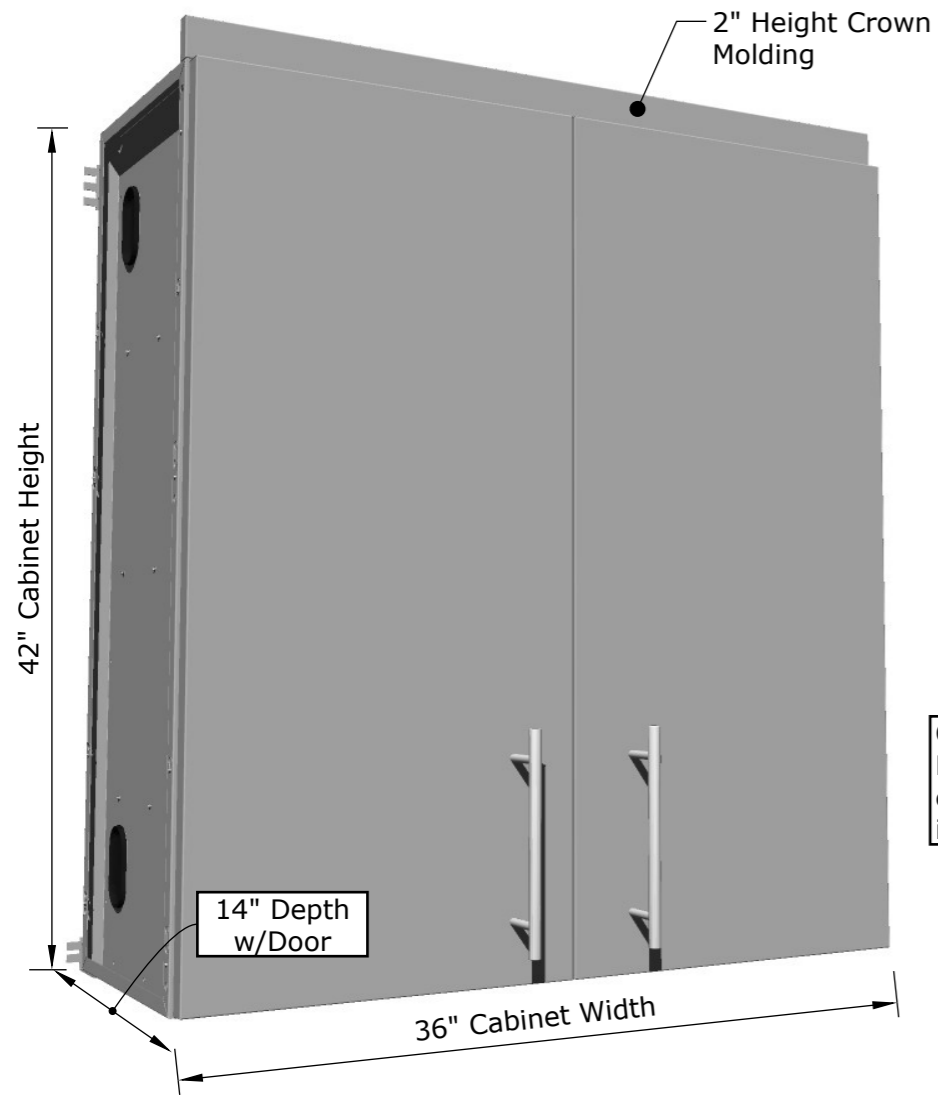
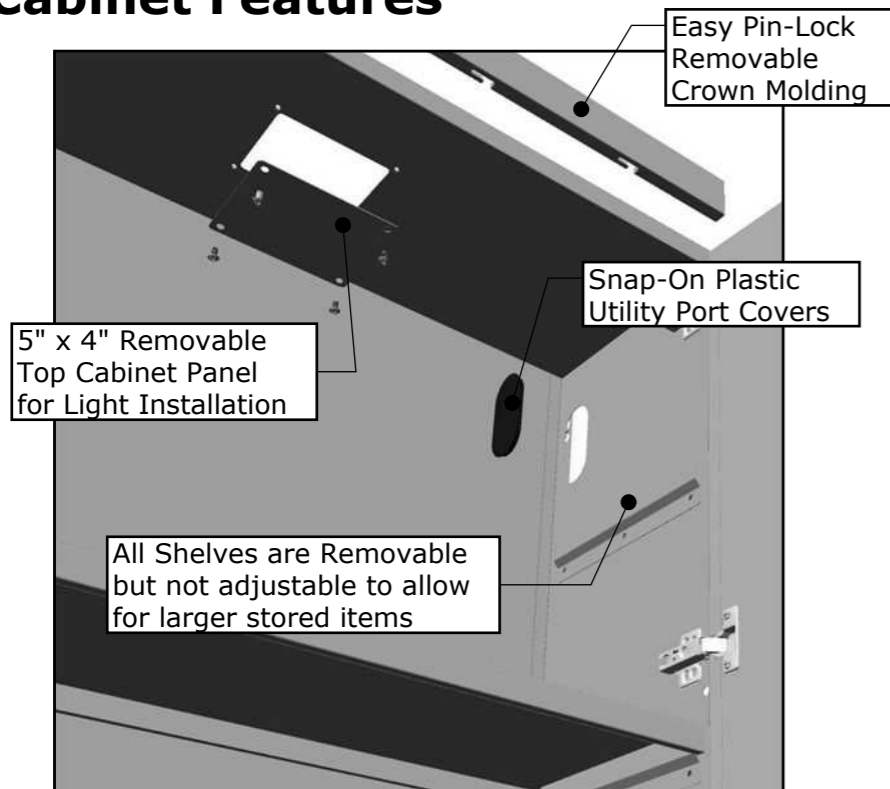


## Product Dimensions

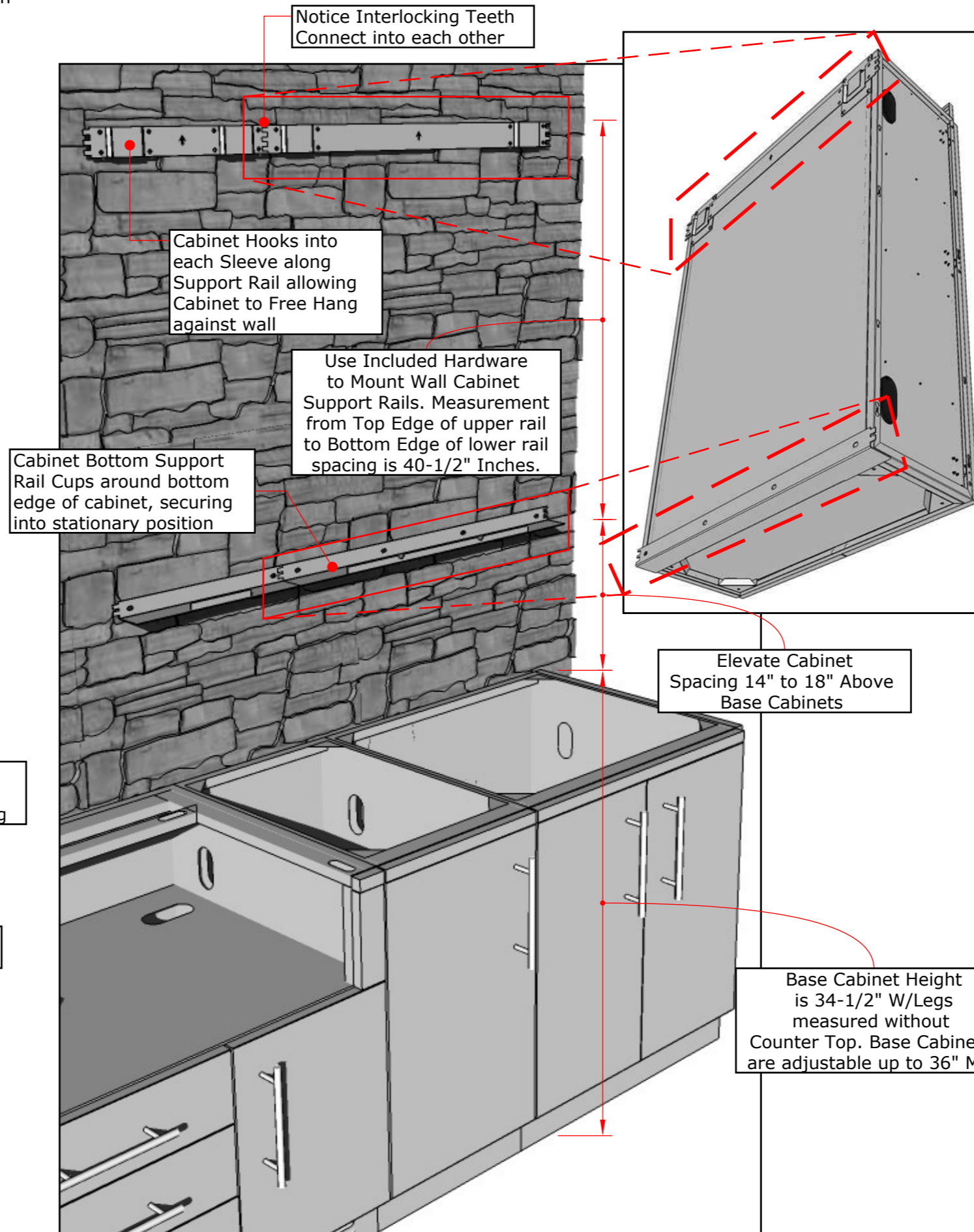


## Cabinet Features



## Wall Cabinet Installation -

See full Cabinet Island Instruction for complete details



**SUNSTONE METAL PRODUCTS**  
 16004 CENTRAL COMMERCE DR.  
 PFLUGERVILLE, TEXAS 78660  
 Tel: 888.934.9449  
 Bus: 512.487.5116  
 Fax: 512.487.7016

### PRODUCT

36" Full Height Wall Cabinet  
 w/Four Shelves

**Item No.** SWC36FDD

### DESCRIPTION

36" Full Height Wall Cabinet with Double Paneled Doors and Four Interior Shelves.

- Lifetime Structure Warranty
- 304 Stainless Steel Structure
- 304 SS Rod Handles
- 2" Crown Molding
- Pin-Lock & Screwed Installation
- Cabinet Style Door Hinges
- Covered Access Ports
- Four Interior Shelves

### PRODUCT DIMENSIONS

36"W x 14"D (w/Panel) x 42"H  
 or 44"H (w/Crown)

### MATERIAL SPECS

304 Stainless Steel entire structure, 18 Gauge for Door Panel, 18 Gauge for Cabinet Box, 18 Gauge for Shelf, Handles are made of Solid 304 Stainless Steel Bar.