



PRODUCT

15" Single Door Dry Storage Pantry
Item No. DE-DVPR15

DESCRIPTION

Designer Series, Raised Style - 15" Single Right Swing Door Dry Storage Pantry w/Shelf, Utility Port, & Legs

PRODUCT DIMENSIONS

15" WIDTH x23" HEIGHT x23" DEPTH (PRODUCT SIZE) 13-1/2" WIDTH x21" HEIGHT x22" DEPTH (CUT-OUT)

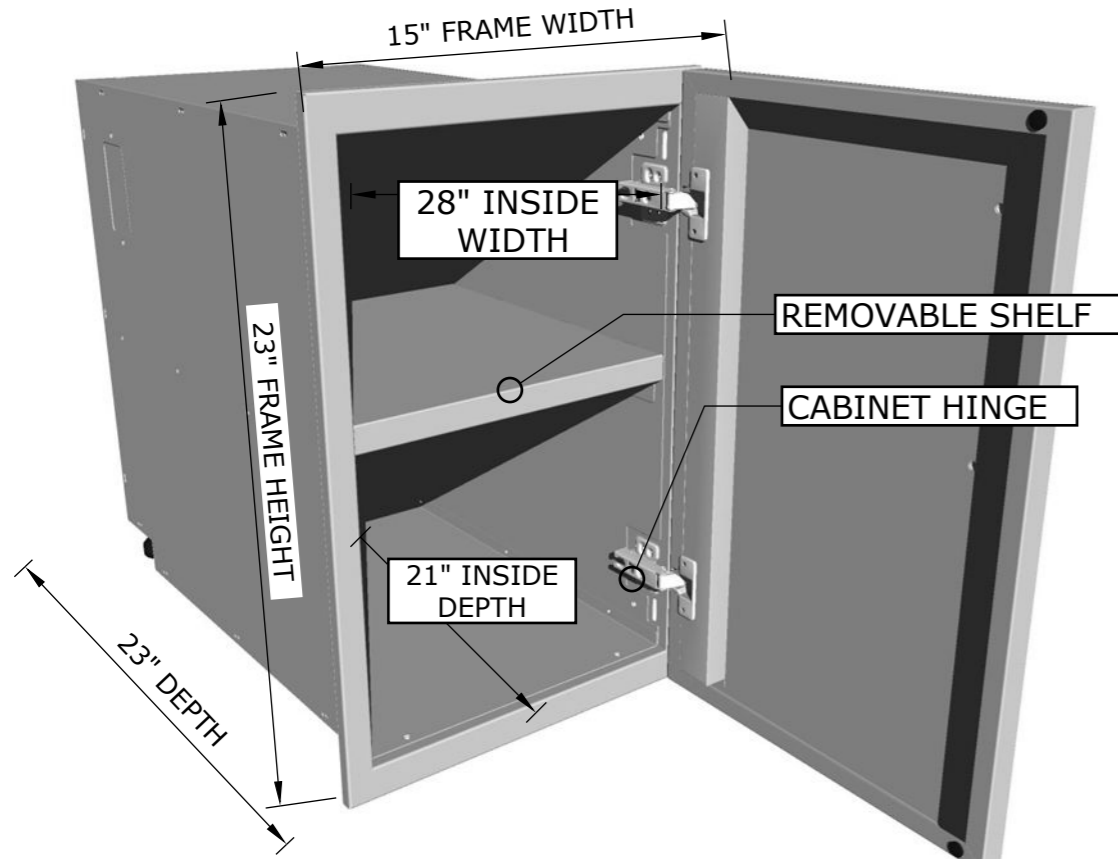
SPECIFICATIONS

Door Frame is made from 16 gauge 304 Stainless Steel, and door panel is made from 18 gauge 304 Stainless Steel. Box is made of 18 gauge Galvanized Steel. Handle is Solid 304 Stainless Steel.

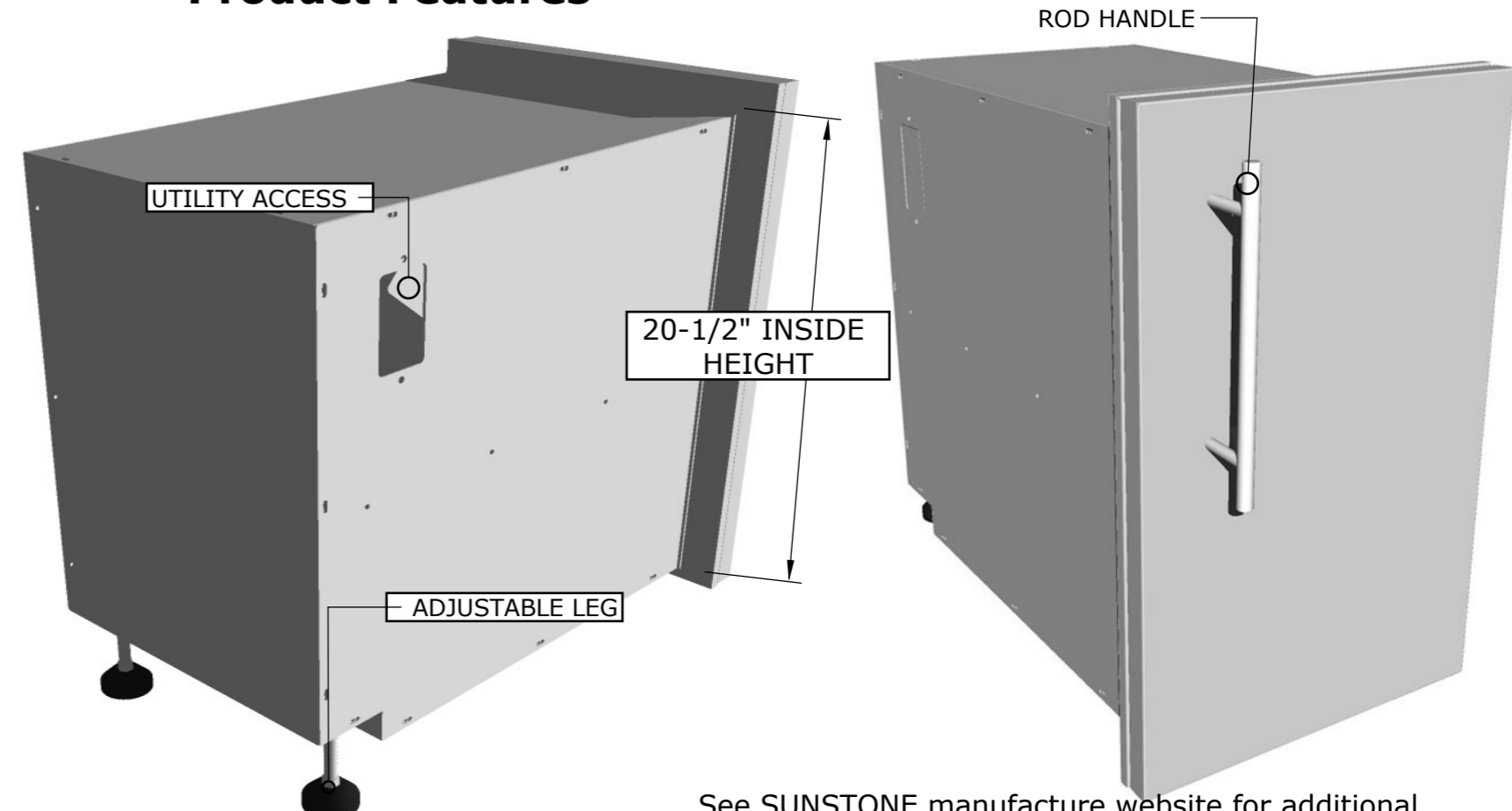
WARRANTY

- EXTERIOR FINISH -----3 YEARS
- ROD HANDLES-----3 YEARS
- CABINET HINGE----- 1 YEAR
- PEG-LEGS----- 1 YEAR

Product Dimensions



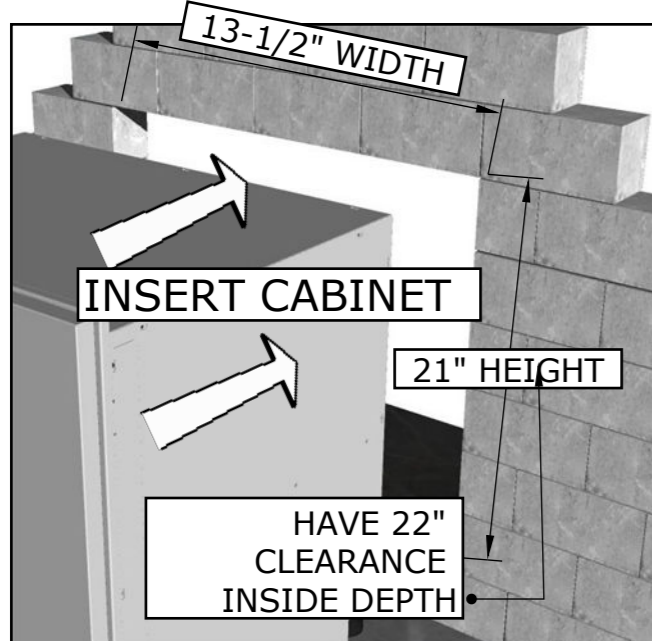
Product Features



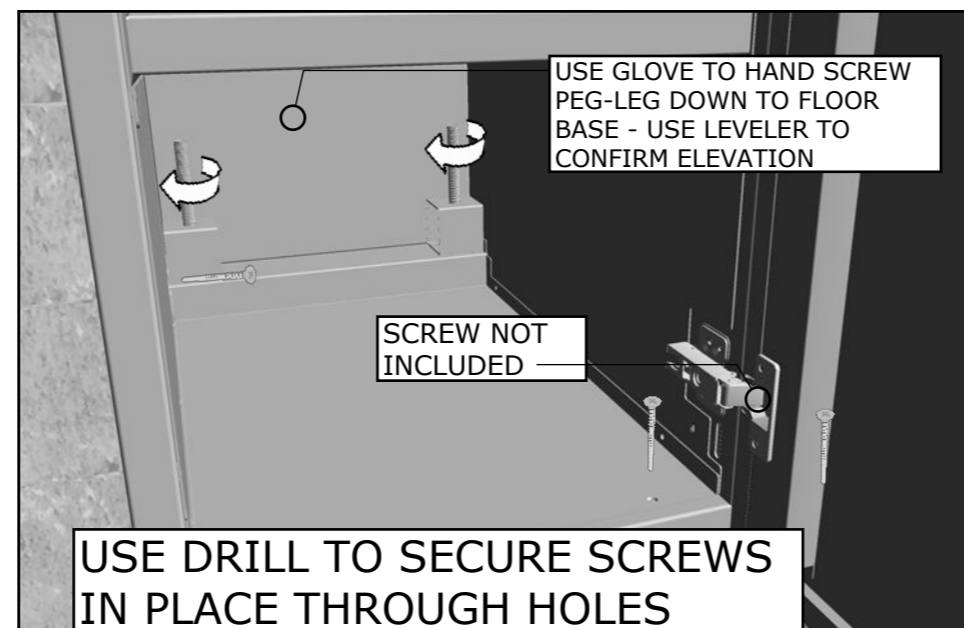
Product Installation

ISLAND WALL CUT-OUT SIZE IS 13-1/2" WIDTH BY 21" HEIGHT BY 22" DEPTH

1 . INSERT COMPONENT



2. MOUNT CABINET TO WALL LOWER LEGS



IMPORTANT!! - ROD HANDLES ARE MOUNTED TO INSIDE OF EACH PANEL, YOU MUST UNSCREW EACH ONE AND MOUNT ON OUTSIDE OF DRAWER OR DOOR PANEL.

See SUNSTONE manufacture website for additional product support and product tutorials:
www.sunstonemetalproducts.com