

SUNSTONE

METAL PRODUCTS

2020 CATALOG



*“Committed to Quality
Committed to You”*

304 STAINLESS STEEL BUILT-IN RUBY GAS GRILLS

LIMITED LIFETIME WARRANTY THREE YEAR GUARANTEE ON I-BURNERS

PRODUCT DESCRIPTION:

- ALL 304 Stainless Steel Grill Hood & Body
- ALL 304 Stainless Steel Components
- 14 Gauge 304 SS PRO-SEAR Cooking Grid
- 11 Gauge 304 SS Fabricated I-Burners
- Grease Removal System for Less Flare-ups
- Enhanced Heat Distribution and Smoke Generation
- LED Lighting on Control Panel
- Easy Access Service Panel
- Variable Spaced Cooking Grid
- Rear Hood Wind Guards
- Dual High & Low Rotisserie Rods - Upgrade
- Up to 800 Degree Searing Heat
- Extra-Wide 16,000 BTU Infrared Burner
- Flame Thrower Ignition for ALL Burners
- Convenient Stow-Away Warming Rack
- Extra-Bright Halogen Interior Grill Lights
- Optional use 2 Rot. Rods at same time



30" RUBY 3 BURNER GRILL
Item No: RUBY3B-LP/NG
Product Size: 30"W x 27" D x 22" H
Cut-out: 27-1/2" W x 22" D x 10" H
up to: 60,000 BTU



36" RUBY 4 BURNER GRILL
Item No: RUBY4B-LP/NG
Product Size: 36"W x 27" D x 22" H
Cut-out: 33-1/2" W x 22" D x 10" H
up to: 80,000 BTU



36" RUBY 4 BURNER GRILL W/IR
Item No: RUBY4B-IR-LP/NG
Product Size: 36"W x 27" D x 22" H
Cut-out: 33-1/2" W x 22" D x 10" H
up to: 100,000 BTU



42" RUBY 5 BURNER GRILL W/IR
Item No: RUBY5B-IR-LP/NG
Product Size: 42"W x 27" D x 22" H
Cut-out: 39-1/2" W x 22" D x 10" H
up to: 120,000 BTU

RUBY SERIES GAS GRILL PRODUCT FEATURES



RELIABLE FLAME THROWER IGNITION



DUAL HIGH & LOW ROTISSERIE RODS -
WITH UPGRADE



14 GAUGE 304 SS PRO-SEAR THERMAL
GRID & VARIABLE COOKING GRID PACING



EASY DROP OPEN SERVICE PANEL



LED LIGHTING ON CONTROL PANEL



11 GAUGE 304 SS FABRICATED I-BURNERS



REAR HOOD WIND GUARDS

304 STAINLESS STEEL BUILT-IN HYBRID CHARCOAL GRILLS

LIMITED LIFETIME WARRANTY

TRUE GAS-HYBRID CHARCOAL/WOOD BURNING GRILL

- ALL 14 Gauge 304 Stainless Steel Drawer System
- ALL 304 Stainless Steel Grill Hood & Body
- Easy Lift Spring Assisted Hood
- 30" & 42" Hybrid Grills 35,000 BTU Burners
- 30" Hybrid Grill Infra-Red 15,500 BTU Burner
- Height Adjustable Burn Trays
- Burn Charcoal, Wood Chips or Wood Logs
- Removable Drawer for easy cleaning
- Refillable Lock Safety Burn Drawer
- Included Stow-Away Dual Level Warming Rack
- LED Lighting on Control Panel
- Flame Thrower Starter for All Burners
- Extra Bright Halogen Interior Grill Lights
- Optional up to 2 Rot.Rods at the same time



30" GAS-HYBRID CHARCOAL GRILL

Item No: SUNCHSZ30
Product Size: 30"W x 27-1/2"D x 28"H
Cut-out: 27-1/2"W x 22"D x 12-3/4"H



42" GAS HYBRID DUAL ZONE CHARCOAL/WOOD BURNING GRILL

Item No: EMCHDZ42
Product Size: 42"W x 27-1/8"D x 28"H
Cut-out: 40"W x 22"D x 12-3/4"H



Sunstone Dual Zone Charcoal Grills offer an exclusive Top and Bottom burn tray. Now you can have charcoal in the bottom tray while using the smoker box in the upper tray, you can even load up your favorite whole wood logs in the top adjustable tray while elevating the drawer within one inch below the cooking grates for serious Searing Power.



DUAL LEVEL WARMING RACK



BACK HOOD LOUVER VENTING



GAS IGNITION BURNERS

304 STAINLESS STEEL POWER BURNER



- up to 65,000 BTU's
- 3-In-1 Solid 304 SS 20" DIA. Cooking Grate
- 15" DIA. Pizza Stone w/Elevation (Included)
- 304 SS Large Vented Cover w/Temp. Gauge
- LED Lighting on Control Panel
- 19" DIA. Solid Steel Griddle w/Oil Pan (Optional)
- Cold Water Pot Filler w/Flex Neck (Optional)



15" DIA. PIZZA STONE



20" DIA. 3-IN-1 COOKING GRATE



19" DIA. SOLID STEEL GRIDDLE



(Optional)

SUNSTONE® 24" POWER CIRQUE™ BURNER

Item No: SUN24PCB
 Product Size: 24" W x 26-1/2"D x 18-1/2"H
 FireBox Size: 22-1/4" W x 22-1/4"D x 9"H
 Cut-out: 22-3/4" W x 22-1/2"D x 10"H

RUBY SERIES COMPANION PRO



- Complete Grill ALL-IN-ONE
- Dual Infra-red Burners
- LED Lighting on Control Panel
- Solid 304 SS Grates
- Perforated Flavor Rack
- Roll-Along Drip Pan
- Removable 304 SS Lid
- Burner Combustion Vent

RUBY SERIES COMPANION PRO

Item No: SUN13CPR0
 Product Size: 13-1/4" W x 26"D x 12-3/4"H
 Cut-out: 10-5/8" W x 22-3/4"D x 10-3/4"H

- DEEP FRYER
Commercial Size with Basket, Steamer, Cover (Optional)
- SEARING GRATE
Over 800 Degree Perforated Grate (Optional)
- GRIDDLE
Heavy-Duty with Grease Reservoir (Optional)
- COOKING GRATES
Solid 304 SS Rods (Included)
- FLAVOR RACK
Reduce Flare Ups with Even Heat (Included)
- CHARCOAL TRAY
Burn Charcoal or Wood Chips (Optional)



RUBY SERIES SINGLE & DOUBLE VERSA BURNER



RUBY SERIES COUNTER-TOP OR DROP-IN VERSA SINGLE BURNER

Item No: SUN13VSB-LP/NG
 Product Size: 13"W x 19"D x 8-1/2"H
 Cut-out: 16"W x 22"D x 9"H
 upto 15,000 BTU's



RUBY SERIES 13" SLIDE IN VERSA DOUBLE BURNER

Item No: SUN13VDB-LP/NG
 Product Size: 13"W x 23-1/2"D x 12-1/2"H
 Cut-out: 12"W x 20-1/4"D x 9"H
 upto 30,000 BTU's

- LED Light on Contral Panel

304 STAINLESS STEEL ICE CHEST/BAR CENTERS/OUTDOOR FRIDGE



RUBY SERIES 14" BAR SINK COCKTAIL STATION
 Item No: B-RCS14
 Product Size: 14"W x 11"H x 25"D
 Cut-out: 13-1/4"W x 9-3/4"H x 21-1/2"D



OVER/UNDER MOUNT 14" X 20" INSULATED ICE CHEST W/COVER
 Item No: B-IC14
 Product Size: 13-1/2"W x 20-1/2"D x 12"H
 Cut-out: 12-1/2"W x 18-1/4"D



28" DROP IN INSULATED ICE CHEST
 Item No: A-IC
 Product Size: 28"W x 21"D x 13-1/2"H
 Cut-out: 26-1/8"W x 19-1/8"D x 10-1/4"H



OUTDOOR RATED 304 SS FRIDGE
 Item No: SAPFR21PRO
 Product Size: 20-1/2"W x 33-1/2"H x 22-3/4"D
 Cut-out: 21-1/4"W x 34-3/8" H x 23-5/8"D

304 STAINLESS STEEL BAR SINKS

POPULAR OUTDOOR SINK OPTIONS TO FIT ANY NEED WITH COVER



17" SINK W/HOT & COLD WATER FAUCET
 Item No: A-SS17
 Product Size: 16-1/4"W x 17-1/2" DX 6-1/2"H
 Cut-out: 15-1/4"W x 16-1/4"D



21" PREMIUM SINK W/HOT & COLD WATER FAUCET & CUTTING BOARD
 Item No: B-PS21
 Product Size: 20-3/4"W x 21"D x 9-1/4"H
 Cut-out: 18-1/4"W x 18-1/2"D



OVER/UNDER MOUNT 20" X 20" SINGLE BASIN SINK W/COVER
 Item No: B-SK20
 Product Size: 20-1/2"W x 20-1/2"D x 11-1/2"H
 Cut-out: 19"W x 19"D



OVER/UNDER MOUNT 34" X 20" DOUBLE BASIN SINK W/COVERS
 Item No: B-SK34
 Product Size: 34"W x 20-1/2"D x 11-1/2"H
 Cut-out: 32"W x 19"D



20" ADA COMPLIANT SINK W/COVER & HOT/COLD FAUCET
 Item No: ADASK20
 Product Size: 20-1/2"W x 22-1/4"D x 5"H
 Cut-out: 16-3/4"W x 19"D x 3-3/4"H



37" ADA COMPLIANT DOUBLE SINK W/COVER & HOT/COLD FAUCET
 Item No: ADASK37
 Product Size: 37"W x 22"D x 5"H
 Cut-out: 35"W x 19-1/2"D x 3-3/4"H



CLASSIC SERIES - FLUSH STYLE DOORS/DRAWERS - 304 STAINLESS STEEL

PERFECT FOR ALL STUCCO WALL INSTALLATIONS



12" X 12" SINGLE UTILITY ACCESS DOOR

Item No: C-SD12
Product Size: 12"W x 12"H x 1-5/8"D
Cut-out: 9-1/4"W x 9-1/4"H



12" X 12" SINGLE UTILITY VENTED DOOR

Item No: C-VSDL (LEFT SWING)
Item No: C-VSDR (RIGHT SWING)
Product Size: 12"W x 12"H x 1-5/8"D
Cut-out: 9-1/4"W x 9-1/4"H



REVERSIBLE FLUSH SINGLE ACCESS DOOR

Item No: DH1724 Product Size: 27"W x 20"H x 1-5/8"D Cut-out: 24-1/4"W x 17-1/4"H	Item No: DV1724 Product Size: 20"W x 27"H x 1-5/8"D Cut-out: 17-1/4"W x 24-1/4"H
Item No: DH1420 (not shown) Product Size: 23"W x 17"H x 1-5/8"D Cut-out: 20-1/4"W x 14-1/4"H	Item No: DV1420 (not shown) Product Size: 17"W x 23"H x 1-5/8"D Cut-out: 14-1/4"W x 20-1/4"H



FLUSH SINGLE HORIZONTAL DOOR VENTED

Item No: A-DH1724 (Right Swing)
Item No: A-DH1724-L (Left Swing)
Product Size: 27"W x 20"H x 1-5/8"D
Cut-out: 24-1/4"W x 17-1/4"H

Item No: A-DH1420 (Right Swing)
Item No: A-DH1420-L (Left Swing)
Product Size: 23"W x 17"H x 1-5/8"D
Cut-out: 20-1/4"W x 14-1/4"H



FLUSH SINGLE VERTICAL DOOR VENTED

Item No: A-DV1724 (Right Swing)
Item No: A-DV1724-L (Left Swing)
Product Size: 20"W x 27"H x 1-5/8"D
Cut-out: 17-1/4"W x 24-1/4"H

Item No: A-DV1420 (Right Swing)
Item No: A-DV1420-L (Left Swing)
Product Size: 17"W x 23"H x 1-5/8"D
Cut-out: 14-1/4"W x 20-1/4"H



30" 36" 42" FLUSH DOUBLE ACCESS DOOR

Item No: A-DD30
Product Size: 30"W x 21"H x 1-5/8"D
Cut-out: 27-1/2"W x 18-1/4"H

Item No: A-DD36 (not shown) Product Size: 36"W x 21"H x 1-5/8"D Cut-out: 33-1/2"W x 18-1/4"H	Item No: A-DD42 (not shown) Product Size: 42"W x 21"H x 1-5/8"D Cut-out: 39-1/2"W x 18-1/4"H
--	--



30" 36" 42" FLUSH VENTED DOUBLE DOOR

Item No: C-DD30
Product Size: 30"W x 21"H x 1-5/8"D
Cut-out: 27-1/2"W x 18-1/4"H

Item No: C-DD36 (not shown) Product Size: 36"W x 21"H x 1-5/8"D Cut-out: 33-1/2"W x 18-1/4"H	Item No: C-DD42 (not shown) Product Size: 42"W x 21"H x 1-5/8"D Cut-out: 39-1/2"W x 18-1/4"H
--	--



FLUSH DRAWER & PAPER HOLDER COMBO

Item No: A-DPCF
Product Size: 17"W x 30"H x 20-1/2"D
Cut-out: 15-1/2"W x 27-1/2"H



14" FLUSH DRAWER SYSTEM

Item No: B-SD6 (Single Drawer) Product Size: 14"W x 8-1/2"H x 23"D Cut-out: 12-1/4"W x 6-1/2"H	Item No: B-DD12 (Double Drawer) Product Size: 14"W x 14-3/8"H x 23"D Cut-out: 12-1/4"W x 12-1/2"H
--	---

Item No: B-TD18 (Triple Drawer)
Product Size: 14"W x 20-1/4"H x 23"D
Cut-out: 12-1/4"W x 18-3/4"H



20" TANK TRAY DOOR COMBO

Item No: C-LPCDD20
Product Size: 20"W x 17"D x 27"H
Cut-out: 18-1/2"W x 24-1/2"H



17" X 24" REVERSIBLE FLUSH HORIZONTAL DRY STORAGE

Item No: DSH1724
Product Size: 27"W x 20"H x 21"D
Cut-out: 24-3/4"W x 18"H



24" X 17" VERTICAL DRY STORAGE W/SHELF

Item No: DSV2417
Product Size: 20"W x 27"H x 21"D
Cut-out: 18"W x 24-3/4"H



20" FLUSH TRASH DRAWER

Item No: A-TRHD
Product Size: 20"W x 16-1/8"D x 27"H
Cut-out: 17-7/8"W x 24-3/8"H



30" FLUSH DOUBLE DOOR DRY STORAGE PANTRY

Item No: DSH30
Product Size: 30"W x 21-1/8"H x 21"D
Cut-out: 27-1/2"W x 18-1/4"H



30" FLUSH TANK TRAY DOUBLE DRAWER COMBO

Item No: A-LPCDD30
Product Size: 30"W x 23"D x 23"H
Cut-out: 27-1/2"W x 20-1/2"H



30" FLUSH TANK TRAY TRIPLE DRAWER COMBO

Item No: A-LPCTD30
Product Size: 30"W x 23"D x 23"H
Cut-out: 27-1/2"W x 20-1/2"H



42" FLUSH MULTI-STORAGE DRAWER, TANK TRAY W/WARMING DRAWER

Item No: A-LPCDD42
Product Size: 42"W x 23-1/4"H x 23"D
Cut-out: 39-3/8"W x 20-1/2"H

SIGNATURE SERIES - BEVELED STYLE DOORS/DRAWERS - 304 STAINLESS STEEL

PERFECT FOR ALL VENEER STONE FINISH WALL INSTALLATIONS



12" X 12" SINGLE UTILITY ACCESS DOOR

Item No: BA-SD12
Product Size: 12" W x 12" H x 3" D
Cut-out: 10-1/4" W x 10-1/4" H



12" X 12" SINGLE UTILITY VENTED DOOR

Item No: BA-VSDL (LEFT SWING)
Item No: BA-VSDR (RIGHT SWING)
Product Size: 12" W x 12" H x 3" D
Cut-out: 10-1/4" W x 10-1/4" H



SINGLE HORIZONTAL VENTED DOOR

Item No: BA-VDHL1724 (Left Swing)
Item No: BA-VDHR1724 (Right Swing)
Product Size: 27" W x 20" H x 3" D
Cut-out: 25" W x 18" H
Item No: BA-VDHL1420 (Left Swing)
Item No: BA-VDHR1420 (Right Swing)
Product Size: 23" W x 17" H x 3" D
Cut-out: 21" W x 15" H



SINGLE VERTICAL VENTED DOOR

Item No: BA-VDVL1724 (Left Swing)
Item No: BA-VDVR1724 (Right Swing)
Product Size: 20" W x 27" H x 3" D
Cut-out: 18" W x 25" H
Item No: BA-VDVL1420 (Left Swing)
Item No: BA-VDVR1420 (Right Swing)
Product Size: 17" W x 23" H x 3" D
Cut-out: 15" W x 21" H



REVERSIBLE SINGLE ACCESS DOOR

Item No: BA-DH1724
Product Size: 27" W x 20" H x 3" D
Cut-out: 24-7/8" W x 18" H
Item No: BA-DH1420 (not shown)
Product Size: 23" W x 17" H x 3" D
Cut-out: 20-7/8" W x 15" H
Item No: BA-DV1724
Product Size: 20" W x 27" H x 3" D
Cut-out: 18" W x 24-7/8" H
Item No: BA-DV1420 (not shown)
Product Size: 17" W x 23" H x 3" D
Cut-out: 15" W x 20-7/8" H



30" 36" 42" DOUBLE ACCESS DOOR

Item No: BA-DD30
Product Size: 30" W x 21" H x 3" D
Cut-out: 28" W x 19" H
Item No: BA-DD42 (not shown)
Product Size: 42" W x 21" H x 3" D
Cut-out: 40" W x 19" H
Item No: BA-DD36 (not shown)
Product Size: 36" W x 21" H x 3" D
Cut-out: 34" W x 19" H



30" 36" 42" DOUBLE VENTED DOOR

Item No: BA-VDD30
Product Size: 30" W x 21" H x 3" D
Cut-out: 28" W x 19" H
Item No: BA-VDD36 (not shown)
Product Size: 36" W x 21" H x 3" D
Cut-out: 34" W x 19" H
Item No: BA-VDD42 (not shown)
Product Size: 42" W x 21" H x 3" D
Cut-out: 40" W x 19" H



20" TRASH DRAWER W/2 BINS

Item No: BA-TRD1724
Product Size: 20" W x 27" H x 23" D
Cut-out: 18-1/4" W x 25-1/4" H



14" DRAWER SYSTEM

Item No: BA-DD6
Product Size: 14" W x 8-1/2" H x 23" D
Cut-out: 12-1/4" W x 6-1/2" H
Item No: BA-DD12
Product Size: 14" W x 14-3/8" H x 23" D
Cut-out: 12-1/4" W x 12-1/2" H
Item No: BA-DD18
Product Size: 14" W x 20-1/4" H x 23" D
Cut-out: 12-1/4" W x 18-3/4" H



24" X 17" WEATHER SEALED DRY STORAGE

Item No: BA-DSV1724
Product Size: 20" W x 27" H x 23" D
Cut-out: 18-1/4" W x 25-1/4" H



30" WEATHER SEALED DRY STORAGE

Item No: BA-DSH30
Product Size: 30" W x 27" H x 20-1/2" D
Cut-out: 28-1/4" W x 19-1/4" H



17" PAPER TOWEL DRAWER COMBO

Item No: BA-DPCF17
Product Size: 17" W x 30" H x 20-1/2" D
Cut-out: 15-1/4" W x 28-1/4" H



12" SPICE RACK DRAWER W/REMOVAL BINS

Item No: BA-SPRD12
Product Size: 12" W x 30" H x 23" D
Cut-out: 10-1/4" W x 28-1/4" H



30" PROPANE COMBO W/TRASH BAG RING

Item No: BA-LPCTD30
Product Size: 30" W x 23" H x 22-1/2" D
Cut-out: 28" W x 21" H



24" FRIDGE TRIM FOR 21" FRIDGES

Item No: BA-FRTR21
Product Size: 24" W x 36" H
Cut-out: 22-1/4" W x 34" H
Insert Size: 21-1/2" W x 33-3/4" H



18" VENTED DOOR W/CONCEALED PRESSURE HINGE HOLDER

Item No: BA-SWENT
Product Size: 18" W x 6-1/2" H x 3-1/4" D
Cut-out: 16" W x 4-3/4" H



PAPER TOWEL HOLDER

Item No: BA-TH17
Product Size: 8-3/4" W x 17-1/4" H x 8-1/4" D
Cut-out: 6-3/4" W x 15-3/8" H

DESIGNER SERIES - RAISED STYLE DOORS/DRAWERS - 304 STAINLESS STEEL

PERFECT FOR ALL MASONRY CONSTRUCTION INSTALLATIONS



15" SINGLE DOOR W/SHELF

Item No: DE-DVR15(Right Swing)
DE-DVL15(Left Swing)
Product Size: 15"W x 23"H x 5"D
Cut-out: 13-1/2"W x 21"H



30" 36" 42" DOUBLE DOOR W/SHELVES

Item NO: DE-DD30 Item NO: DE-DD36
Product Size: 30"W x 23"H x 5"D Product Size: 36"W x 23"H x 5"D
Cut-out: 28-1/2"W x 21"H Cut-out: 34-1/2"W x 21"H
Item NO: DE-DD42
Product Size: 42"W x 23"H x 5"D
Cut-out: 40-1/2"W x 21"H



30" PROPANE TRIPLE DRAWER COMBO W/SELF-LEVELING LEGS

Item No: DE-LPCTD30
Product Size: 30"W x 23" H x 23-1/4"D
Cut-out: 28-1/2"W x 21"H x 22"D



18" DOUBLE DRAWER W/SELF-LEVELING LEGS

Item No: DE-DD13
Product Size: 18"W x 13"H x 23-1/4"D
Cut-out: 16-1/2"W x 11" H x 22"D



18" TRIPLE DRAWER W/SELF-LEVELING LEGS

Item No: DE-TD23
Product Size: 18"W x 23" H x 23-1/4"D
Cut-out: 16-1/2"W x 21" H x 22"D



18" TRASH DRAWER W/SELF-LEVELING LEGS & BIN

Item No: DE-TRD18
Product Size: 18"W x 23" H x 23-1/4"D
Cut-out: 16-1/2"W x 21"H



18" PAPER TOWEL DRAWER COMBO W/SELF-LEVELING LEGS

Item No: DE-DPCF23
Product Size: 18"W x 23" H x 23-1/4"D
Cut-out: 16-1/2"W x 21"H x 22"D



30" X 6-1/2" DRAWER W/SELF-LEVELING LEGS

Item No: DE-SD30
Product Size: 30"W x 6-1/2" H x 23-1/4"D
Cut-out: 28-1/2"W x 4-1/2" H x 22"D



30" X 10" DRAWER W/SELF-LEVELING LEGS

Item No: DE-MD30
Product Size: 30"W x 10" H x 23-1/4"D
Cut-out: 28-1/2"W x 8" H x 22"D



15" DRY STORAGE PANTRY W/SHELF & UTILITY ACCESS SELF-LEVELING LEGS

Item No: DE-DVPR15 (Right Swing)
DE-DVPL15 (Left Swing)
Product Size: 15"W x 23" H x 23-1/4"D
Cut-out: 13-1/2"W x 21"H x 22"D



30" DRY STORAGE PANTRY W /SHELVES & UTILITY ACCESS SELF-LEVELING LEGS

Item No: DE-DDP30
Product Size: 30"W x 23" H x 23-1/4"D
Cut-out: 28-1/2"W x 21"H x 22"D



13"H MULTI-CONFIGURABLE TILT-OUT PAPER TOWEL, CUTLERY DRAWER & CUTTING BOARD

Item No: DE-DPCF13
Product Size: 18"W x 13" H x 23-1/4"D
Cut-out: 16-1/2"W x 11"H

"Designer components can be installed in groups vertically or horizontally all within one single cut-out"

304 STAINLESS STEEL HYBRID GRILL CABINETS

ADA compliant for all cabinets upon request

30" KAMADO HYBRID CABINET



SAC30KBDC
30"W x 28-1/4"D x 34-1/2"H
see Speedrail & Shelf in Accessories

PRODUCT OPTIONS
Sunstone 24" Power Cirque®- SUN24PCB
Fits Kamado Grills up to 24-1/2" Dia.

33" POWER BURNER CABINET



SAC33PBDC
33"W x 28-1/4"D x 34-1/2"H

PRODUCT OPTIONS
Sunstone 24" Power Cirque®-SUN24PCB
Compatible with Appliance cut out of 19"W
to 22-3/4" W x 12-3/4" max Height w/counter

- LIFETIME STRUCTURE WARRANTY
 - SOFT-CLOSE DRAWER TRACKS
 - COVERED ACCESS PORTS
 - FRONT VENTED KICK-PLATE
 - EASY PIN-LOCK INSTALLATION
 - 4 ADJUSTABLE PEG-LEGS
 - REAR SOLID KICK-PLATE
 - REMOVABLE COUNTER RAIL
 - REPLACEABLE FACE PANEL
- CONFIRM PROPER TRIM KITS FOR YOUR GRILLS OR POWER BURNERS WITH AUTHORIZED DEALERS

304 STAINLESS STEEL GAS GRILL CABINETS

34" GASGRILLBASE CABINET



SAC34GLPDC
34"W x 28-1/4"D x 34-1/2"H

PRODUCT OPTIONS
30" Ruby® Grill, Sunstone® 28" Grill,
Compatible with Appliance cut out of
23-7/8" W to 28-1/2" W x 10-1/4" H
w/3/4" Counter

40" GASGRILLBASE CABINET



SAC40GLPDC
40"W x 28-1/4"D x 34-1/2"H

PRODUCT OPTIONS
36" Ruby® Grill, Sunstone® 34" Grill
Compatible with Appliance cut out of
34-1/2" W to 34-1/2" W x 10-1/4" H
w/3/4" Counter

304 SS GAS GRILL CABINETS

46" GAS GRILL BASE CABINET



SAC46GLPDC
46"W x 28-1/4"D x 34-1/2"H

PRODUCT OPTIONS
42" Ruby® Grill, Sunstone® 42" Grill
Compatible with Appliance cut out of
35-3/4" W to 40-1/2" W x 10-1/4" H
w/3/4" Counter

304 SS CHARCOAL GRILL CABINETS

34" CHARCOAL GRILL BASE CABINET



SAC34CGDC
34"W x 28-1/4"D x 34-1/2"H

PRODUCT OPTIONS
Sunstone® 30" & 28" Charcoal Grill
Compatible with Appliance cut out of
25" W to 28-1/2" W x 12-3/4" H
w/3/4" Counter

- LIFETIME STRUCTURE WARRANTY
 - SOFT-CLOSE DRAWER TRACKS
 - COVERED ACCESS PORTS
 - FRONT VENTED KICK-PLATE
 - EASY PIN-LOCK INSTALLATION
 - 4 ADJUSTABLE PEG-LEGS
 - REAR SOLID KICK-PLATE
 - REMOVABLE COUNTER RAIL
 - REPLACEABLE FACE PANEL
- CONFIRM PROPER TRIM KITS FOR YOUR GRILLS OR POWER BURNERS WITH AUTHORIZED DEALERS

304 SS CHARCOAL GRILL CABINETS

46" CHARCOAL GRILL BASE CABINET

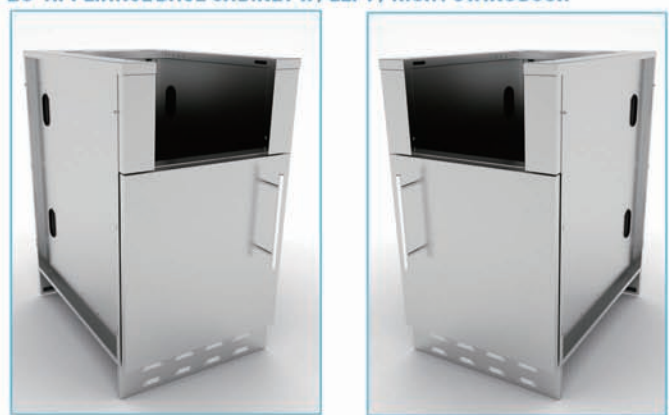


SAC46CGDC
46"W x 28-1/4"D x 34-1/2"H

PRODUCT OPTIONS
Sunstone® 42" Charcoal Grill
Compatible with Appliance cut out of
35-3/4" W to 40-1/2" W x 12-3/4" H
w/3/4" Counter

304 SS APPLIANCE CABINETS

20" APPLIANCE BASE CABINET W/ LEFT / RIGHT SWING DOOR



SAC20CSDL
20"W x 28-1/4"D x 34-1/2"H

SAC20CSDR
20"W x 28-1/4"D x 34-1/2"H

PRODUCT OPTIONS
Sunstone® Cocktail Pro,
Ruby® Versa Double Burner
Compatible with Appliance cut out of
9-3/4" W to 14-1/2" W x 10-1/4" H
w/3/4" Counter

304 STAINLESS STEEL APPLIANCE CABINETS

ADA compliant for all cabinets upon request



SAC24APC PACKAGE

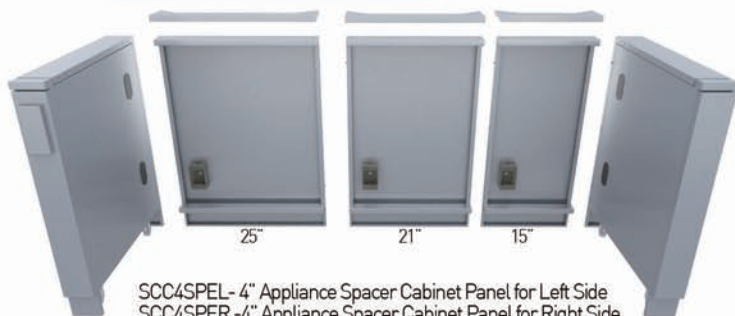
24"W x 28-1/4"D x 34-1/2"H
Fits up to 15" W Appliances

SAC30APC PACKAGE

30"W x 28-1/4"D x 34-1/2"H
Fits up to 21" W Appliances

SAC34APC PACKAGE

34"W x 28-1/4"D x 34-1/2"H
Fits up to 25" W Appliances



SCC4SPEL- 4" Appliance Spacer Cabinet Panel for Left Side
SCC4SPER -4" Appliance Spacer Cabinet Panel for Right Side

SCC15SPE - 15" Back Panel for Item No.SAC24APC
SCC21SPE - 21" Back Panel for Item No.SAC30APC
SCC25SPE - 25" Back Panel for Item No.SAC34APC

"USE INDIVIDUALLY OR IN GROUP OF MULTIPLES"

- LIFETIME STRUCTURE WARRANTY
- SOFT-CLOSE DRAWER TRACKS
- COVERED ACCESS PORTS
- FRONT SOLID KICK-PLATE
- EASY PIN-LOCK INSTALLATION
- 4 ADJUSTABLE PEG-LEGS
- REAR SOLID KICK-PLATE
- REMOVABLE COUNTER RAIL
- REPLACEABLE FACE PANEL

304 STAINLESS STEEL STORAGE CABINETS



**12" SPICE RACK DRAWER
W/2 REMOVABLE BINS**
Item No: SBC12SSRD
Product Size: 12"W x 28-1/4"D x 34-1/2"H



**12" 4 MULTI DRAWER
BASE CABINET**
Item No: SBC12SMD
Product Size: 12"W x 28-1/4"D x 34-1/2"H



**18" TRASH DRAWER CABINET
W/TWO TRASH BINS**
Item No: SBC18STRD
Product Size: 18"W x 28-1/4"D x 34-1/2"H



**18" COMBO PAPER TOWEL HOLDER/
CUTLERY DRAWER WITH CUTTING BOARD
& INSULATED ICE CHEST DRY STORAGE**
Item No: SBC18DPIC
Product Size: 18"W x 28-1/4"D x 34-1/2"H



**18" PROPANE/TRASH DRAWER
W/TOP DRAWER**
Item No: SBC18SLPCD
Product Size: 18"W x 28-1/4"D x 34-1/2"H



18" TRIPLE DRAWER CABINET
Item No: SBC18STD
Product Size: 18"W x 28-1/4"D x 34-1/2"H



24" TRIPLE DRAWER CABINET
Item No: SBC24STD
Product Size: 24"W x 28-1/4"D x 34-1/2"H



30" TRIPLE DRAWER CABINET
Item No: SBC30STD
Product Size: 30"W x 28-1/4"D x 34-1/2"H



**30" SEALED DRY STORAGE
W/DRAWERS & SHELVES**
Item No: SBC30DSPC
Product Size: 30"W x 28-1/4"D x 34-1/2"H



**12"X12" CORNER CABINET
W/SWIVEL SHELVES**
Item No: SBC12SLS
Product Size: 24"W x 28-1/4"D x 34-1/2"H
Insert Size: 15-1/2" W x 33-1/4" H x 25-1/4" D

304 STAINLESS STEEL BASE CABINETS

ADA compliant for all cabinets upon request



18" LEFT SWING DOOR CABINET W/TWO SHELVES
Item No: SBC18FSDL
Product Size: 18"W x 28-1/4"D x 34-1/2"H



18" RIGHT SWING DOOR CABINET W/TWO SHELVES
Item No: SBC18FSDR
Product Size: 18"W x 28-1/4"D x 34-1/2"H



18" LEFT SWING DOOR CABINET W/ TOP DRAWER & SHELF
Item No: SBC18CSDL
Product Size: 18"W x 28-1/4"D x 34-1/2"H



18" LEFT SWING DOOR CABINET W/ TOP DRAWER & SHELF
Item No: SBC18CSDR
Product Size: 18"W x 28-1/4"D x 34-1/2"H



24" FULL DOUBLE DOOR BASE CABINET W/TWO SHELVES
Item No: SBC24FDD
Product Size: 24"W x 28-1/4"D x 34-1/2"H

30" FULL DOUBLE DOOR BASE CABINET W/TWO SHELVES
Item No: SBC30FDD
Product Size: 30"W x 28-1/4"D x 34-1/2"H

36" FULL DOUBLE DOOR BASE CABINET W/TWO SHELVES
Item No: SBC36FDD
Product Size: 36"W x 28-1/4"D x 34-1/2"H



24" DOUBLE DOOR CABINET W/DRAWER SWAP WITH FALSE TOP PANEL W/SHELF
Item No: SBC24CDD
Product Size: 24"W x 28-1/4"D x 34-1/2"H

30" DOUBLE DOOR CABINET W/DRAWER SWAP WITH FALSE TOP PANEL W/SHELF
Item No: SBC30CDD
Product Size: 30"W x 28-1/4"D x 34-1/2"H

36" DOUBLE DOOR CABINET W/DRAWER SWAP WITH FALSE TOP PANEL W/SHELF
Item No: SBC36CDD
Product Size: 36"W x 28-1/4"D x 34-1/2"H



44" ADA COMPLIANT SINK CABINET
Item No: ADA44BC
Product Size: 44"W x 28-1/4" D x 32" H



30 DEGREE CORNER CABINET W/UTILITY ACCESS
Item No: SBC5C30
Product Size: 3" W x 3" W by 30 Degree Insert Dimensions: 13" W x 19-1/2" D



45 DEGREE CORNER CABINET W/UTILITY ACCESS
Item No: SBC3C45
Product Size: 3" W x 3" W by 45 Degree Insert Dimensions: 13" W x 19-1/2" D



6" SPACER CABINET W/ELECTRICAL COVER
Item No: SBC16SPEL
Product Size: 6"W x 28-1/4" D x 34-1/2" H

304 STAINLESS STEEL CABINET ACCESSORIES



3" SPACER PANEL FOR CABINET FRONT
Item No: SCC3SPF
Product Size: 3"W x 34-1/4"H x 1"D



3" SPACER PANEL FOR CABINET BACK
Item No: SCC3SPB
Product Size: 3"W x 34-1/4"H x 1"D



6" SPACER PANEL FOR CABINET FRONT
Item No: SCC6SPF
Product Size: 6"W x 34-1/4"H x 1"D



6" SPACER PANEL FOR CABINET BACK
Item No: SCC6SPB
Product Size: 6"W x 34-1/4"H x 1"D



3" X 3" 90 DEGREE SPACER PANEL
Item No: SCC3SP90
Product Size: 3"W x 3"H x 34-1/4"D



for placing cabinets in or next to stone

3" END CORNER GUARD PANEL FOR SIDE OF CABINET

Item No: SCC3ENDSPL (LEFT SIDE)
Product Size: 3"W x 2"D x 34-1/2"H

Item No: SCC3ENDSPR (RIGHT SIDE)
Product Size: 3"W x 2"D x 34-1/2"H



UNIVERSAL BASE END PANEL

Item No: SCC27EP
Product Size: 1"W x 28-1/4"D x 30-1/8"H



25-1/2" UNIVERSAL KICKPLATE FOR LEFT & RIGHT SIDE

Item No: SCC25KP
Product Size: 25-1/2"W x 4"H x 1"D



304 SS HEAVY-DUTY SWIVEL LOCKING WHEEL CASTER

Item No: SLWC
Item No: SAWC

304 STAINLESS STEEL WALL CABINETS



18" UPPER WALL LEFT SWING DOOR CABINET

Item No: SWC18CSDL
Product Size: 18"W x 14"D x 21"H or 23" (w/Crown)

18" UPPER WALL RIGHT SWING DOOR CABINET

Item No: SWC18CSDR
Product Size: 18"W x 14"D x 21"H or 23" (w/Crown)

18" FULL HEIGHT LEFT SWING DOOR CABINET

Item No: SWC18FSDL
Product Size: 18"W x 14"D x 42"H or 44" (w/Crown)

18" HEIGHT RIGHT SWING DOOR CABINET

Item No: SWC18FSDR
Product Size: 18"W x 14"D x 42"H or 44" (w/Crown)



24" FULL HEIGHT DOUBLE DOOR CABINET W/FOUR SHELVES

Item No: SWC24FDD
Product Size: 24"W x 14"D x 42"H or 44" (w/Crown)



30" FULL HEIGHT DOUBLE DOOR CABINET W/FOUR SHELVES

Item No: SWC30FDD
Product Size: 30"W x 14"D x 42"H or 44" (w/Crown)



36" FULL HEIGHT DOUBLE DOOR CABINET W/FOUR SHELVES

Item No: SWC36FDD
Product Size: 36"W x 14"D x 42"H or 44" (w/Crown)



12" X 12" FULL HEIGHT 360 SWIVEL CORNER CABINET W/ 3 SHELVES

Item No: SWC12SLS
Product Size: 12"x 12" W x 14"D x 42"H or 44" (w/Crown)

304 STAINLESS STEEL WALL CABINET COMPONENTS



12" HEIGHT UPPER WALL CABINET END PANEL

Item No: SWC21EP
Product Size: 13" W x 21"H x 1"D



42" HEIGHT UPPER WALL CABINET END PANEL

Item No: SWC42EP
Product Size: 13" W x 42"H x 1"D



12" END CROWN MOLDING PANEL FOR WALL CABINET LEFT/RIGHT

Item No: SWC12ECR
Product Size: 12" L x 21" H x 1"W



3" SPACER PANEL FOR WALL CABINET FRONT

Item No: SWC3SPF
Product Size: 3" W x 44"H



6" SPACER PANEL FOR WALL CABINET FRONT

Item No: SWC6SPF
Product Size: 6" W x 44"H



3" X 3" 90 DEGREE CORNER FOR WALL CABINET FRONT

Item No: SWC3SP90
Product Size: 3" x 3" W x 44"H



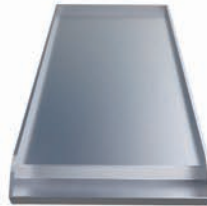
ACCESSORIES



SUNSTONE 10" CHARCOAL TRAY W/REMOVABLE PANEL
Item No: SUNCP-CHTRAY
Works with Ruby Grills/CompanionPro /30" Charcoal Grill



SUNSTONE 10" DEEP FRYER W/COVER, STEAMER TRAY, & FRYER BASKET & COVER
Item No: SUNCP-FYER
Works with Ruby Grills/CompanionPro /30" Charcoal Grill



SUNSTONE 10" GRIDDLE WITH OIL RESERVOIR
Item No: SUNCP-GRIDDLE
Works with Ruby Grills/CompanionPro /30" Charcoal Grill



SUNSTONE 10" PRO SEAR BURNER
Item No: SUNCP-SEAR
Works with Ruby Grills/CompanionPro /30" Charcoal Grill



19" DIA. SOLID STEEL FLAT-TOP GRIDDLE W/NON-STICK FINISH OIL-PAN
Item No: SUN24PCB-GRIDDLE



SATIN FINISH COLD WATER FAUCET W/FLEXIBLE NECK
Item No: SUN24PCB-FAUCET



15"X4-1/2" 304 SS VENT
Item No: VENT-S
Product Size: 15"W x 4-1/2" H



15"X6-1/2" 304 SS VENT
Item No: VENT-L
Product Size: 15"W x 6-1/2" H



304 SS STACKABLE VENT
Item No: VENT-GBOX
Product Size: 9" W x 4"D x 6" H
Cut-out: 8" W x 4"D x 4-7/8" H



304 SS DRAFT DRIP PAN
Item No: BC-DT14
Product Size: 13-1/2" W x 5-1/2" D x 7" H
Works with 14" Cocktail Station



304 SS BAR CADDY
Item No: BC-BC14
Product Size: 13-1/2" W x 5-1/2" D x 7" H
Works with 14" Cocktail Station



304 SS FLOATING FLAT WALL SHELF
Item No: SCC30KB-WLSHELF
Product Size: 22-1/2"W x 1-3/8"H x 8"D
Works with 30" Kamado Hybrid Cabinet



304 SS SPEED RAIL POCKET SHELF
Item No: SCC30KB-SPRAIL
Product Size: 22-1/2"W x 5"H x 4-1/2"D
Works with 30" Kamado Hybrid Cabinet



304 SS ROTISSERIE KIT
Item No: P-RK-3B [Fits size 28" 30" Grill]
Item No: P-RK-4B [Fits size 34-36" Grill]
Item No: P-RK-5B [Fits size 42" Grill]



10 PIECE TAINLESS STEEL BBQ TOOL SET W/CARRY CASES
Item No: BBQTS10



14.5" DIA. X 31" H PROPANE TANK "DOLLY"
Item No: SUNHR-S



WEATHER PROOF GRILL COVER
Item No: G-Cover4B
Fits Ruby3B&4B 30" to 36" Grills
Item No: G-Cover5B
Fits Ruby5B 42" Grills

WEATHER PROOF DOUBLE SIDE BURNERCOVER
Item No: CoverDB
Fits Ruby Double Burner

WEATHER PROOF SINGLE SIDE BURNERCOVER
Item No: CoverSBR
Fits Ruby Single Burner



304 SS SMOKER BOX
Item No: P-SMBOX
Product Size: 3-3/4" W x 9"D x 1-5/8" H



12' HOSE W/QUICK CONNECT FOR NATURAL GAS
Item No: NG-HOSE



Item No: P-Dhandle
Item No: P-Bhandle
Item No: P-handle

COMPONENTS HANDLE OPTIONS

304 STAINLESS STEEL ISLAND PACKAGES



CABANA 10'-8" ADA COMPLIANT GRILL/BURNER & DOUBLE SINK PACKAGE
Item No:SCPCABANA



DALLAS 9'-11" GAS CHARCOAL HYBRID GRILL/BURNER/POWER BURNER PACKAGE
Item No:SCPDALLAS



CAPRICE 6' GRILL & BAR SINK OUTDOOR ISLAND PACKAGE
Item No:SCPCAPRICE



BRAZOS 10' GRILL/BURNER & FRIDGE ISLAND PACKAGE
Item No:SCPBRAZOS



HOUSTON 9'-8" GRILL/DOUBLE BURNER/BAR SINK & FRIDGE ISLAND PACKAGE
Item No:SCPHOUSTON



KAMADO 8' GRILL/BURNER & KAMADO INSERT CABINET ISLAND PACKAGE
Item No:SCPKAMADO



AUSTIN 9' GRILL/DOUBLE BURNER/COMPANION PRO & BAR CENTER PACKAGE
Item No:SCPAUSTIN



MONGO 8'-2" SOLID STEEL 19" GRIDDLE BURNER W/ICE BIN & BAR SINK PACKAGE
Item No:SCPMONGO

"Use this Space to Design your Dream Outdoor Kitchen"

[Proud Texas Based Company](#)

Sunstone Metal Products LLC
16004 Central Commerce dr
Pflugerville, TX 78660
T: 512.487.5116 F: 512.487.7016
Mon-Thur. 9am to 4:30pm
www.sunstonemetalproducts.com

SUNSTONE®

Project Title:

Name:

Phone:

Address: